

The new dimensions in efficiency and flexibility: Light grid ELG and MLG



- cost-effective and fast integration into the system,
- simple commissioning.

The automation light grid MLG is as variable as you require it to be. It has a host of possibilities with regard to size, resolution, configuration and interfaces. The electronics are completely integrated in the compact housing. Height measurement, zone division and monitoring, object recognition, hole and crack detection, slack control and free-passage control are all tasks suitable for the MLG.

For monitoring of excess level on pallets, for automatic doors or gates or for reliable counting in a picking station, a single-beam sensor for object detection is frequently inadequate. In such applications the ELG light grid with its parallel beams is the reliable, economic and installation-friendly solution.

In addition, the multiple scan function makes it possible to detect not just large objects, but also small ones down to 10 mm.

Inputs and outputs as well as the data interface offer a wide range of possible interface combinations. If important parameters, such as the size of the objects to be detected, are unknown or variable, the user-friendly software MLG-setup offers a number of parametering suggestions.


An application assistant helps in setting up the most common applications.

Advantages for you:

- Large selection of monitoring heights, beam spacing and scanning ranges etc.,



ELG 1 short range light grid

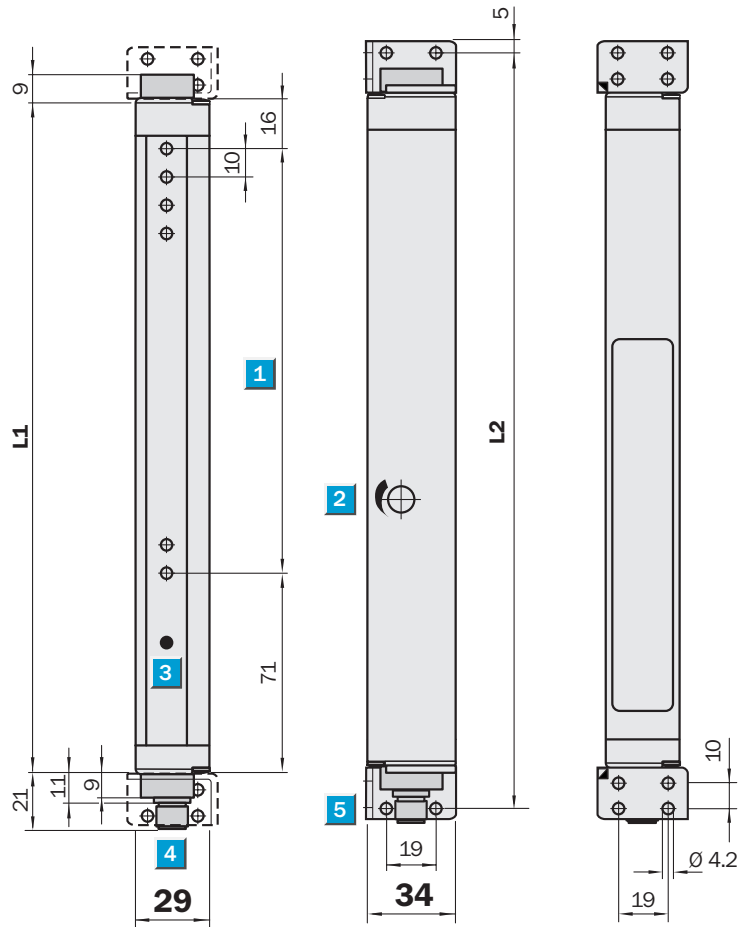
 **3 m range**

Through beam light grid

- Beam spacing 10 mm
- Industrial standard outputs
- Optical synchronization
- Compact housing
- Mounting bracket included with delivery



Dimensional drawing



- 1** Detection height: 100/150 mm
- 2** Sensitivity adjustment
- 3** Status indicator (ELG E)/Power on (ELG S)
- 4** M12 plug, 4-pin
- 5** Mounting bracket (included with delivery)

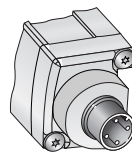
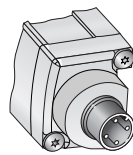
Dimensions „L“ (mm)

| 1 | L1 | L2 |
|--------|-----|-----|
| 100 mm | 187 | 217 |
| 150 mm | 237 | 267 |

Connection type

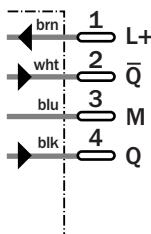
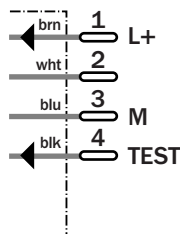
ELG S1-xxxxD53x

ELG E1-xxxxP53x



Sender
M12, 4-pin

Receiver
M12, 4-pin



Accessories

Cables and connectors

Mounting systems

| Technical data | | ELG 1- | 0100 P531 | 0150 P531 | 0100 P533 | 0150 P533 | | | | | |
|--|--|--------|--------------|--------------|--------------|--------------|--|--|--|--|--|
| Beam spacing | 10 mm | | | | | | | | | | |
| Detection height | 100 mm | | | | | | | | | | |
| | 150 mm | | | | | | | | | | |
| Number of beams | 11 | | | | | | | | | | |
| | 16 | | | | | | | | | | |
| Range | 0 ... 3 m | | | | | | | | | | |
| Multiple scan (3 x) | See optical performance | | | | | | | | | | |
| Synchronization | Optical synchronization | | | | | | | | | | |
| Light source | LED, infrared | | | | | | | | | | |
| Voltage supply V_S 1) | 15 ... 30 V DC | | | | | | | | | | |
| Residual ripple | < 10 % within V _S tolerance | | | | | | | | | | |
| Current consumption Sender | < 100 mA | | | | | | | | | | |
| Current consumption Receiver 2) | < 100 mA | | | | | | | | | | |
| Connection | M12 plug, 4-pin | | | | | | | | | | |
| Switch output | 2 x PNP output 3): \bar{Q} and Q | | | | | | | | | | |
| Operating mode | Q dark-switching, \bar{Q} light-switching | | | | | | | | | | |
| Output current I _A max. | 100 mA | | | | | | | | | | |
| Output load | Capacitive load: 100 nF Inductive load: 1H | | | | | | | | | | |
| Test input »TE« | Sender OFF: Test input to V _S | | | | | | | | | | |
| Response time 4) | Max. 12 ms | | | | | | | | | | |
| | Max. 36 ms | | | | | | | | | | |
| Initialisation duration after Power ON | Max. 300 ms | | | | | | | | | | |
| High immunity to ambient light | 150.000 lx (sunlight) | | | | | | | | | | |
| VDE protection class | III | | | | | | | | | | |
| Circuit protection 5) | A, B, C | | | | | | | | | | |
| Enclosure rating | IP 65 | | | | | | | | | | |
| Ambient temperature T_A | Operation -25 ... +55 °C Storage -40 ... +70 °C | | | | | | | | | | |
| Mechanical resistance | Vibration: 5 g; 10-55/s – IEC 68-2-6 Shock: 10 g; 16 ms – IEC 68-2-29 | | | | | | | | | | |
| Weight 6) | Approx. 350 g | | | | | | | | | | |
| Material | Housing Aluminium anodized Front lens PMMA | | | | | | | | | | |

1) Limit values
2) Without load at V_S = 24 V
3) NPN on demand
4) With resistive load

5) A = V_S-connections reverse-polarity protected
B = Outputs Q and \bar{Q} short-circuit protected
C = Interference pulse suppression

| Optical performance | | | | Order information | |
|---------------------|------------------|-----------------------------------|------------------------------------|-------------------|-----------|
| Beam spacing | Detection height | MDO: minimum detectable object 6) | | Type | Order no. |
| | | in front of ELGS or ELGE | at mid-point between ELGS and ELGE | | |
| 10 mm | 100/150 mm | 15 mm | 15 mm | ELG 1-0100P531 | 1 026 807 |
| | | | 10 mm 7) | ELG 1-0150P531 | 1 026 741 |
| | | | | ELG 1-0100P533 | 1 026 808 |
| | | | | ELG 1-0150P533 | 1 026 809 |

6) MDO: minimum detectable object for non-moving objects, measured in a direction parallel to ELG

7) At mid-point between ELG S and ELG E with multiple scan

| Technical data | | ELG 3- | 0090 | 0150 | 0210 | 0330 | 0210 | 0330 | 0450 | 0570 | 0690 | 0930 |
|--|--|--------|------|------|------|------|------|------|------|------|------|------|
| Beam spacing | 30 mm | | | | | | | | | | | |
| Detection height | See selection table page 10 | | | | | | | | | | | |
| Number of beams | See selection table page 10 | | | | | | | | | | | |
| Range | 0 ... 2 m | | | | | | | | | | | |
| Multiple scan | 3 x (reduced MDO) | | | | | | | | | | | |
| Synchronization | Optical synchronization | | | | | | | | | | | |
| Light source | LED, infrared | | | | | | | | | | | |
| Voltage supply V_S ¹⁾ | 15 ... 30 V DC | | | | | | | | | | | |
| Residual ripple | < 10 % within V_S tolerance | | | | | | | | | | | |
| Current consumption Sender | < 100 mA | | | | | | | | | | | |
| Current consumption Receiver ²⁾ | < 100 mA | | | | | | | | | | | |
| Connection | M12 plug, 4-pin | | | | | | | | | | | |
| Switch output | 2 x PNP output ³⁾ : \bar{Q} and Q | | | | | | | | | | | |
| Operating mode | Q dark-switching, \bar{Q} light-switching | | | | | | | | | | | |
| Output current I_A max. | 100 mA | | | | | | | | | | | |
| Output load | Capacitive load: 100 nF Inductive load: 1H | | | | | | | | | | | |
| Response time ⁴⁾ | Max. 100 ms | | | | | | | | | | | |
| Initialisation duration after Power ON | Max. 300 ms | | | | | | | | | | | |
| Test input »TE« | Sender OFF: Test input to V_S | | | | | | | | | | | |
| High immunity to ambient light | 150,000 lx (sunlight) | | | | | | | | | | | |
| VDE protection class | III | | | | | | | | | | | |
| Circuit protection ⁵⁾ | A, B, C | | | | | | | | | | | |
| Enclosure rating | IP 65 | | | | | | | | | | | |
| Ambient temperature T_A | Operation -25 ... +55 °C Storage -40 ... +70 °C | | | | | | | | | | | |
| Mechanical resistance | Vibration: 5 g; 10-55/s – IEC 68-2-6 Shock: 10 g; 16 ms – IEC 68-2-29 | | | | | | | | | | | |
| Weight ⁶⁾ | Approx. 350 ... 1700 g | | | | | | | | | | | |
| Material | Housing Aluminium anodized Front lens PMMA | | | | | | | | | | | |

1) Limit values

2) Without load at $V_S = 24 V$

3) NPN on demand

4) With resistive load

5) A = V_S -connections reverse-polarity protected

B = Outputs Q and \bar{Q} short-circuit protected

C = Interference pulse suppression


6) 350 g for 90 mm detection height, increase 160 g per 100 mm

| Optical performance | | | | |
|---------------------|------------------|--|--|------------------------------------|
| Beam spacing | Detection height | MDO: minimum detectable object ⁷⁾ | | |
| | | in front of ELGS or ELGE | | at mid-point between ELGS and ELGE |
| 30 mm | 90 ... 930 mm | 35 mm | | 35 mm |
| | | | | 25 mm ⁸⁾ |

7) MDO: minimum detectable object for non-moving objects, measured in a direction parallel to ELG

8) Only ELG 3-XXXXP513 with multiple scan

ELG long range light grid

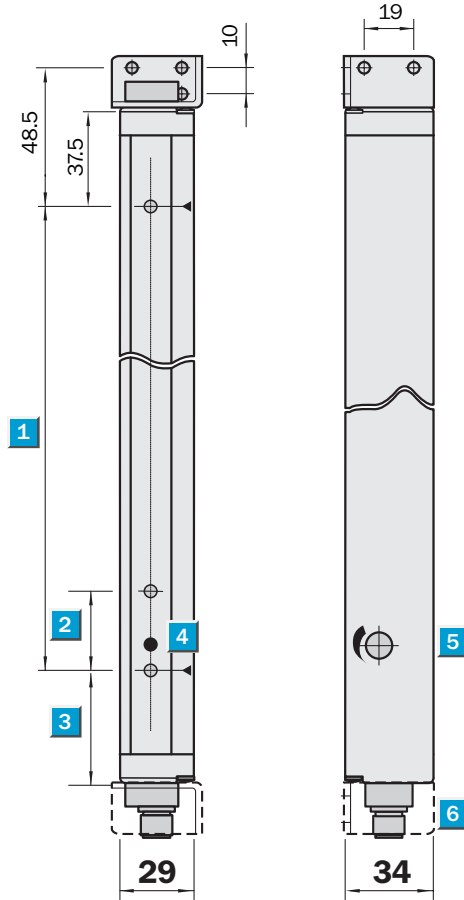
 **12 m range**

Through beam light grid

- Wide range of options
- High immunity against sunlight
- Optical synchronization
- Compact housing
- Beam spacing 30 mm/60 mm



Dimensional drawing

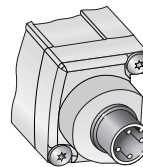
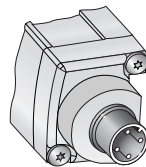


- 1** Detection height (see next page)
- 2** Beam spacing ELG 3: 30 mm/ELG 6: 60 mm
- 3** Distance to first beam ELG 3: 42.5 mm/ELG 6: 72.5 mm
- 4** Status indicator (ELG E)/Power on (ELG S)
- 5** Sensitivity adjustment
- 6** M12 plugs, 4-pin

Connection type

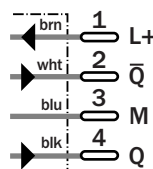
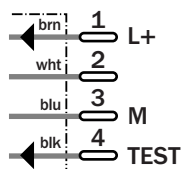
ELG S3-xxxxD52x
ELG S6-xxxxD52x

ELG E3-xxxxP52x
ELG E6-xxxxP52x
ELG E3-xxxxN52x



Sender
M12, 4-pin

Receiver
M12, 4-pin



Accessories

Cables and connectors

Mounting systems

| Technical data | | ELG X- | 0450 | 0570 | 0690 | 0930 | 1050 | 1410 | 1650 | 1890 | 2070 | 2370 |
|--|--|--------|------|------|------|------|------|------|------|------|------|------|
| Beam spacing | See selection table page 10 | | | | | | | | | | | |
| Detection height | See selection table page 10 | | | | | | | | | | | |
| Number of beams | See selection table page 10 | | | | | | | | | | | |
| Range | 0 ... 12 m | | | | | | | | | | | |
| Synchronization | Optical synchronization | | | | | | | | | | | |
| Light source | LED, infrared | | | | | | | | | | | |
| Voltage supply V_S ¹⁾ | 15 ... 30 V DC | | | | | | | | | | | |
| Residual ripple | < 10 % within V_S tolerance | | | | | | | | | | | |
| Current consumption Sender | < 100 mA | | | | | | | | | | | |
| Current consumption Receiver ²⁾ | < 100 mA | | | | | | | | | | | |
| Connection | M12 plug, 4-pin (cable optional) | | | | | | | | | | | |
| Switch output ³⁾ | 2 x PNP output: \bar{Q} and Q | | | | | | | | | | | |
| Operating mode | Q dark-switching, \bar{Q} light-switching | | | | | | | | | | | |
| Output current I_A max. | 100 mA | | | | | | | | | | | |
| Output load | Capacitive load: 100 nF Inductive load: 1H | | | | | | | | | | | |
| Response time ⁴⁾ | Max. 390 ms | | | | | | | | | | | |
| Initialisation duration after Power ON | Max. 300 ms | | | | | | | | | | | |
| Test input »TE« | Sender OFF: Test input to V_S | | | | | | | | | | | |
| High immunity to ambient light | 150,000 lx (sunlight) | | | | | | | | | | | |
| VDE protection class | III | | | | | | | | | | | |
| Circuit protection ⁵⁾ | A, B, C | | | | | | | | | | | |
| Enclosure rating | IP 65 | | | | | | | | | | | |
| Ambient temperature T_A | Operation -25 ... +55 °C Storage -40 ... +70 °C | | | | | | | | | | | |
| Mechanical resistance | Vibration: 5 g; 10-55/s – IEC 68-2-6 Shock: 10 g; 16 ms – IEC 68-2-29 | | | | | | | | | | | |
| Weight ⁶⁾ | Approx. 950 ... 3300 g | | | | | | | | | | | |
| Material | Housing Aluminium anodized Front lens PMMA | | | | | | | | | | | |

¹⁾ Limit values

²⁾ Without load at $V_S = 24$ V

³⁾ NPN on demand

⁴⁾ With resistive load

⁵⁾ A = V_S -connections reverse-polarity protected

B = Outputs Q and \bar{Q} short-circuit protected

C = Interference pulse suppression


⁶⁾ 950 g for 450 mm detection height, increase 160 g per 100 mm

| Optical performance | | | | |
|---------------------|------------------|--|-------|------------------------------------|
| Beam spacing | Detection height | MDO: minimum detectable object ⁷⁾ | | |
| | | in front of ELGS or ELGE | | at mid-point between ELGS and ELGE |
| 30 mm | 210 ... 1890 mm | 35 mm | 35 mm | 25 mm ⁸⁾ |
| 60 mm | 900 ... 2460 mm | 65 mm | 65 mm | 35 mm ⁸⁾ |

⁷⁾ MDO: minimum detectable object for non-moving objects, measured in a direction parallel to ELG

⁸⁾ Only ELG 3-xxxxP523/ELG 6-xxxxP523 with multiple scan

ELG long range light grid – Relay

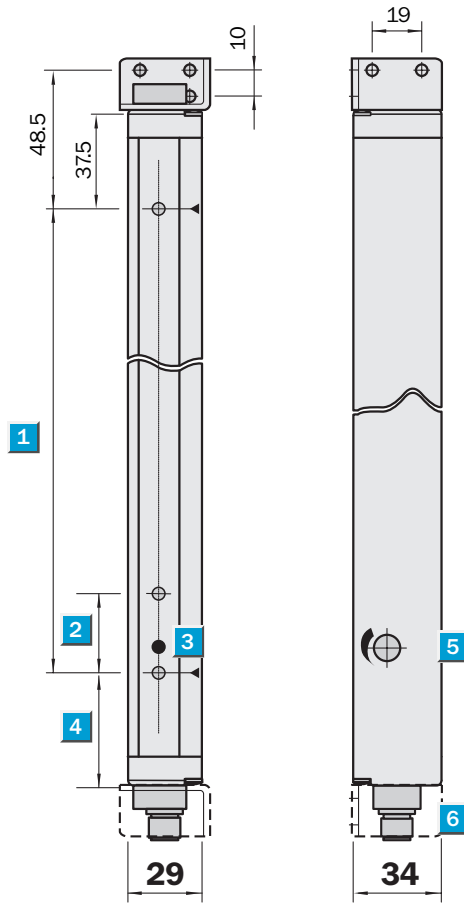
 **12 m range**

Through beam light grid

- Wide range of options
- High immunity against sunlight
- Optical synchronisation
- Relay output 1 x u
- Compact housing
- Beam spacing 30 mm/60 mm



Dimensional drawing



- 1** Detection height
(see next page)
- 2** Beam spacing
ELG 3: 30 mm/ELG 6: 60 mm
- 3** Status indicator (ELG E)/
Power on (ELG S)
- 4** Distance to first beam
ELG 3: 38.5 mm/ELG 6: 68.5 mm
- 5** Sensitivity adjustment
- 6** M12 plug or cable

Connection type

ELG Sx-xxxxD52x

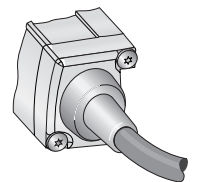
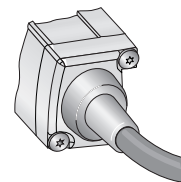
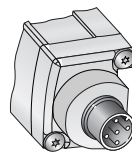
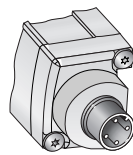
ELG Ex-xxxxR52x

ELG S3-xxxxD12x

ELG E3-xxxxR12x

ELG S3-xxxxD22x

ELG E3-xxxxR22x

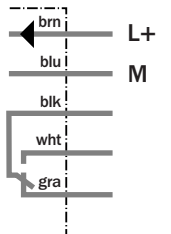
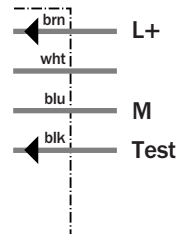
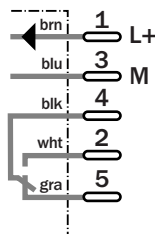
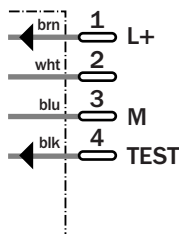


Sender
M12, 4-pin

Receiver
M12, 5-pin

Sender
Cable, 4 wires

Receiver
Cable, 5 wires



Accessories

Cables and connectors

Mounting systems

| Technical data | | ELG | 3-0450 R221 | 3-0930 R121 | 3-0930 R221 | 3-0930 R521 | 3-1890 R121 | 6-0900 R521 | 6-0900 R523 | 6-1380 R523 | 6-1860 R521 | 6-2460 R521 |
|---|--|--------------------|----------------|----------------|----------------|----------------|----------------|----------------|----------------|----------------|----------------|----------------|
| Beam spacing | 30 mm | | | | | | | | | | | |
| | 60 mm | | | | | | | | | | | |
| Detection height | 450 mm | | | | | | | | | | | |
| | 900 mm/930 mm | | | | | | | | | | | |
| | 1380 mm | | | | | | | | | | | |
| | 1860 mm/1890 mm | | | | | | | | | | | |
| | 2460 mm | | | | | | | | | | | |
| Number of beams | 16 | | | | | | | | | | | |
| | 24 | | | | | | | | | | | |
| | 32 | | | | | | | | | | | |
| | 42 | | | | | | | | | | | |
| | 64 | | | | | | | | | | | |
| Range | 0 ... 12 m | | | | | | | | | | | |
| Synchronisation | Optical synchronisation | | | | | | | | | | | |
| Light source | LED, infrared | | | | | | | | | | | |
| Multiple scan (3 x) | Increased resolution | | | | | | | | | | | |
| Voltage supply V_S¹⁾ | 15 ... 30 V DC | | | | | | | | | | | |
| Ripple | < 10 % within V _S tolerances | | | | | | | | | | | |
| Current consumption sender | < 100 mA | | | | | | | | | | | |
| Current consumption receiver ²⁾ | < 100 mA | | | | | | | | | | | |
| Connection | M12 plug | | | | | | | | | | | |
| | Cable, 5 m | | | | | | | | | | | |
| | Cable, 15 m | | | | | | | | | | | |
| Switching output | Relay SPDT isolated NO/NC | | | | | | | | | | | |
| ELG E, operating mode | Relay activated when beams made | | | | | | | | | | | |
| Switching current I _A max. ³⁾ | 0.5 A (AC or DC) | | | | | | | | | | | |
| Switching voltage V _A max. | 25 V AC or 60 V DC, EN 50 178 | | | | | | | | | | | |
| Response time/switching frequency⁴⁾ | Max. 500 ms; 1/s | | | | | | | | | | | |
| Initialisation duration after Power ON | Max. 300 ms | | | | | | | | | | | |
| Test input »TE« | Sender OFF: Test input to V _S | | | | | | | | | | | |
| High Immunity to ambient light | 150,000 lx (sun light) | | | | | | | | | | | |
| VDE protection class | III | | | | | | | | | | | |
| Circuit protection⁵⁾ | A, C | | | | | | | | | | | |
| Enclosure rating | IP 65 | | | | | | | | | | | |
| Ambient temperature T_A | Operation -25 ... +55 °C | | | | | | | | | | | |
| | Storage -40 ... +70 °C | | | | | | | | | | | |
| Mechanical resistance | Vibration: 5 g; 10-55/s – IEC 68-2-6 | | | | | | | | | | | |
| | Shock: 10 g; 10 ms – IEC 68-2-29 | | | | | | | | | | | |
| Weight⁶⁾ | Approx. 950 ... 4150 g | | | | | | | | | | | |
| Material | Housing | Aluminium anodized | | | | | | | | | | |
| | Front lens | PMMA | | | | | | | | | | |

1) Limit values
2) Without load at V_S = 24 V

3) Provide suitable spark suppression for inductive or capacitive loads
4) With resistive load

5) A = V_S-connections reverse-polarity protected
C = Interference pulse suppression

6) 950 g for 450 mm detection height, increment 160 g per 100 mm

| Optical performance | | |
|---------------------|------------------|---|
| Beam spacing | Detection height | MDO: Minimum detectable object size ⁷⁾ |
| 30 mm | 450 ... 2500 mm | 35 mm ⁸⁾ , 35 mm ⁹⁾ /25 mm ¹⁰⁾ |
| 60 mm | 450 ... 2500 mm | 65 mm ⁸⁾ , 65 mm ⁹⁾ /35 mm ¹⁰⁾ |

7) MDO: Minimum Detectable Object size for non-moving objects measured in a direction parallel to the ELG
8) In front of ELG S or ELG E

9) At mid-point between ELG S and ELG E
10) At mid-point between ELG S and ELG E with 3 x multiple scan

| Order information | | | |
|-------------------|-----------|----------------|-----------|
| Type | Order no. | Type | Order no. |
| ELG 3-0450R221 | 1 024 268 | ELG 6-0900R521 | 1 026 181 |
| ELG 3-0930R121 | 1 025 785 | ELG 6-0900R523 | 1 025 453 |
| ELG 3-0930R221 | 1 026 176 | ELG 6-1380R523 | 1 025 451 |
| ELG 3-0930R521 | 1 025 449 | ELG 6-1860R521 | 1 026 182 |
| ELG 3-1890R121 | 1 026 180 | ELG 6-2460R521 | 1 026 183 |

Selection table/Order information

ELG 1 short range, range = 0 ... 3 m/beam spacing 10 mm

| Type | Order no. | Height | No. of beams | Interface/Multiple scan |
|----------------|-----------|--------|--------------|--|
| ELG 1-0100P531 | 1 026 807 | 100 mm | 11 | PNP, 1 x \bar{Q} , 1 x Q, 1 Test input |
| ELG 1-0100P533 | 1 026 808 | 100 mm | 11 | PNP, 1 x \bar{Q} , 1 x Q, 1 Test input |
| ELG 1-0150P531 | 1 026 741 | 150 mm | 16 | PNP, 1 x \bar{Q} , 1 x Q, 1 Test input |
| ELG 1-0150P533 | 1 026 809 | 150 mm | 16 | PNP, 1 x \bar{Q} , 1 x Q, 1 Test input |

ELG short range, range = 0 ... 2 m/beam spacing 30 mm

| Type | Order no. | Height | No. of beams | Interface/Multiple scan |
|----------------|-----------|--------|--------------|---|
| ELG 3-0090P513 | 1 025 443 | 90 mm | 4 | PNP, 1 x \bar{Q} , 1 x Q, 1 Test input, multiple scan |
| ELG 3-0150P513 | 1 025 578 | 150 mm | 6 | PNP, 1 x \bar{Q} , 1 x Q, 1 Test input, multiple scan |
| ELG 3-0210P513 | 1 025 438 | 210 mm | 8 | PNP, 1 x \bar{Q} , 1 x Q, 1 Test input, multiple scan |
| ELG 3-0330P513 | 1 025 576 | 330 mm | 12 | PNP, 1 x \bar{Q} , 1 x Q, 1 Test input, multiple scan |
| ELG 3-0210P511 | 1 025 510 | 210 mm | 8 | PNP, 1 x \bar{Q} , 1 x Q, 1 Test input |
| ELG 3-0330P511 | 1 025 575 | 330 mm | 12 | PNP, 1 x \bar{Q} , 1 x Q, 1 Test input |
| ELG 3-0450P511 | 1 025 490 | 450 mm | 16 | PNP, 1 x \bar{Q} , 1 x Q, 1 Test input |
| ELG 3-0570P511 | 1 025 501 | 570 mm | 20 | PNP, 1 x \bar{Q} , 1 x Q, 1 Test input |
| ELG 3-0690P511 | 1 025 499 | 690 mm | 24 | PNP, 1 x \bar{Q} , 1 x Q, 1 Test input |
| ELG 3-0930P511 | 1 025 492 | 930 mm | 32 | PNP, 1 x \bar{Q} , 1 x Q, 1 Test input |

ELG long range, range = 0 ... 12 m/beam spacing 30 mm

| Type | Order no. | Height | No. of beams | Interface/Multiple scan |
|----------------|-----------|---------|--------------|---|
| ELG 3-0150P521 | 1 026 475 | 150 mm | 6 | PNP, 1 x \bar{Q} , 1 x Q, 1 Test input |
| ELG 3-0210P521 | 1 025 574 | 210 mm | 8 | PNP, 1 x \bar{Q} , 1 x Q, 1 Test input |
| ELG 3-0450P521 | 1 025 440 | 450 mm | 16 | PNP, 1 x \bar{Q} , 1 x Q, 1 Test input |
| ELG 3-0690P521 | 1 025 568 | 690 mm | 24 | PNP, 1 x \bar{Q} , 1 x Q, 1 Test input |
| ELG 3-0810P521 | 1 025 577 | 810 mm | 28 | PNP, 1 x \bar{Q} , 1 x Q, 1 Test input |
| ELG 3-0810P523 | 1 026 177 | 810 mm | 28 | PNP, 1 x \bar{Q} , 1 x Q, 1 Test input, multiple scan |
| ELG 3-0930P521 | 1 025 511 | 930 mm | 32 | PNP, 1 x \bar{Q} , 1 x Q, 1 Test input |
| ELG 3-1050P521 | 1 025 570 | 1050 mm | 36 | PNP, 1 x \bar{Q} , 1 x Q, 1 Test input |
| ELG 3-1170P521 | 1 025 579 | 1170 mm | 40 | PNP, 1 x \bar{Q} , 1 x Q, 1 Test input |
| ELG 3-1410P521 | 1 025 502 | 1410 mm | 48 | PNP, 1 x \bar{Q} , 1 x Q, 1 Test input |
| ELG 3-1410P523 | 1 026 179 | 1410 mm | 48 | PNP, 1 x \bar{Q} , 1 x Q, 1 Test input, multiple scan |
| ELG 3-1650P521 | 1 025 503 | 1650 mm | 56 | PNP, 1 x \bar{Q} , 1 x Q, 1 Test input |
| ELG 3-1890P521 | 1 025 504 | 1890 mm | 64 | PNP, 1 x \bar{Q} , 1 x Q, 1 Test input |
| ELG 3-2070P521 | 1 025 505 | 2070 mm | 70 | PNP, 1 x \bar{Q} , 1 x Q, 1 Test input |
| ELG 3-2070P523 | 1 025 572 | 2070 mm | 70 | PNP, 1 x \bar{Q} , 1 x Q, 1 Test input, multiple scan |
| ELG 3-2370P521 | 1 025 573 | 2370 mm | 80 | PNP, 1 x \bar{Q} , 1 x Q, 1 Test input |
| ELG 3-2370P523 | 1 026 178 | 2370 mm | 80 | PNP, 1 x \bar{Q} , 1 x Q, 1 Test input, multiple scan |
| ELG 3-0210N521 | 1 025 613 | 210 mm | 8 | NPN, 1 x \bar{Q} , 1 x Q, 1 Test input |
| ELG 3-0450N521 | 1 025 614 | 450 mm | 16 | NPN, 1 x \bar{Q} , 1 x Q, 1 Test input |
| ELG 3-0690N521 | 1 025 615 | 690 mm | 24 | NPN, 1 x \bar{Q} , 1 x Q, 1 Test input |
| ELG 3-0930N521 | 1 025 616 | 930 mm | 32 | NPN, 1 x \bar{Q} , 1 x Q, 1 Test input |
| ELG 3-1170N521 | 1 025 617 | 1170 mm | 40 | NPN, 1 x \bar{Q} , 1 x Q, 1 Test input |
| ELG 3-1410N521 | 1 025 618 | 1410 mm | 48 | NPN, 1 x \bar{Q} , 1 x Q, 1 Test input |
| ELG 3-1650N521 | 1 025 620 | 1650 mm | 56 | NPN, 1 x \bar{Q} , 1 x Q, 1 Test input |
| ELG 3-1890N521 | 1 025 621 | 1890 mm | 64 | NPN, 1 x \bar{Q} , 1 x Q, 1 Test input |

ELG long range, range = 0 ... 12 m/beam spacing 60 mm

| Type | Order no. | Height | No. of beams | Interface/Multiple scan |
|----------------|-----------|---------|--------------|---|
| ELG 6-0900P521 | 1 025 447 | 900 mm | 16 | PNP, 1 x \bar{Q} , 1 x Q, 1 Test input |
| ELG 6-1080P521 | 1 025 586 | 1080 mm | 19 | PNP, 1 x \bar{Q} , 1 x Q, 1 Test input |
| ELG 6-1380P521 | 1 025 587 | 1380 mm | 24 | PNP, 1 x \bar{Q} , 1 x Q, 1 Test input |
| ELG 6-1380P523 | 1 025 588 | 1380 mm | 24 | PNP, 1 x \bar{Q} , 1 x Q, 1 Test input, multiple scan |
| ELG 6-1860P521 | 1 025 589 | 1860 mm | 32 | PNP, 1 x \bar{Q} , 1 x Q, 1 Test input |
| ELG 6-1860P523 | 1 025 593 | 1860 mm | 32 | PNP, 1 x \bar{Q} , 1 x Q, 1 Test input, multiple scan |
| ELG 6-2040P523 | 1 025 594 | 2040 mm | 35 | PNP, 1 x \bar{Q} , 1 x Q, 1 Test input, multiple scan |
| ELG 6-2340P521 | 1 025 596 | 2340 mm | 40 | PNP, 1 x \bar{Q} , 1 x Q, 1 Test input |
| ELG 6-2460P523 | 1 024 293 | 2460 mm | 42 | PNP, 1 x \bar{Q} , 1 x Q, 1 Test input, multiple scan |

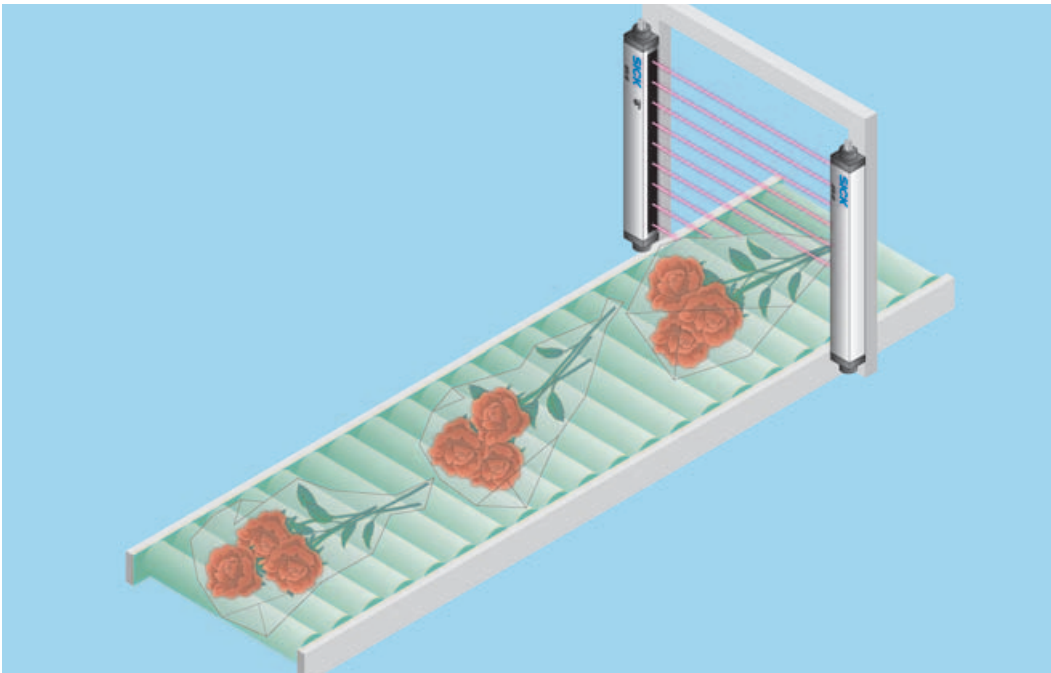
Selection table/Order information

ELG long range – Relay, range = 0 ... 12 m/beam spacing 30 mm

| Type | Order no. | Height | No. of beams | Interface/Multiple scan |
|----------------|-----------|---------|--------------|-----------------------------------|
| ELG 3-0450R221 | 1 024 268 | 450 mm | 16 | Relay output 1 x u, cable 15 m |
| ELG 3-0930R121 | 1 025 785 | 930 mm | 32 | Relay output 1 x u, cable 5 m |
| ELG 3-0930R221 | 1 026 176 | 930 mm | 32 | Relay output 1 x u, cable 15 m |
| ELG 3-0930R523 | 1 026 537 | 930 mm | 32 | Relay output 1 x u, multiple scan |
| ELG 3-1890R121 | 1 026 180 | 1890 mm | 64 | Relay output 1 x u, cable 5 m |

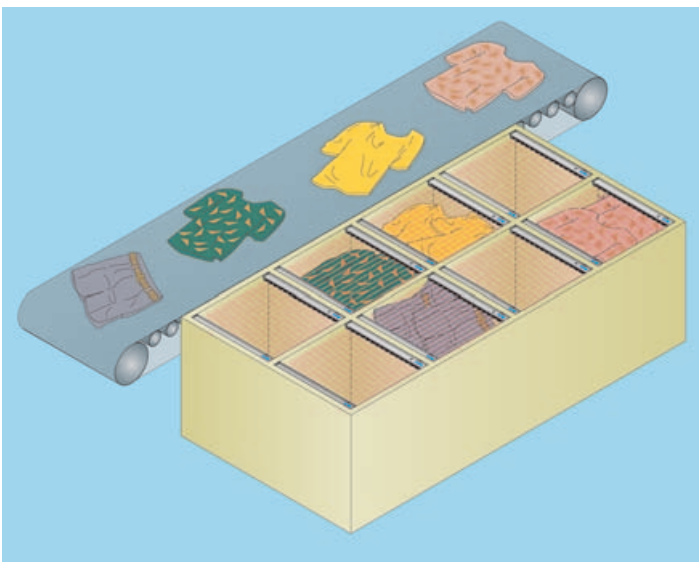
ELG long range – Relay, range = 0 ... 12 m/beam spacing 60 mm

| Type | Order no. | Height | No. of beams | Interface/Multiple scan |
|----------------|-----------|---------|--------------|-----------------------------------|
| ELG 6-0900R521 | 1 026 181 | 900 mm | 16 | Relay output 1 x u |
| ELG 6-0900R523 | 1 025 453 | 900 mm | 16 | Relay output 1 x u, multiple scan |
| ELG 6-1380R523 | 1 024 451 | 1380 mm | 24 | Relay output 1 x u, multiple scan |
| ELG 6-1860R521 | 1 026 182 | 1860 mm | 32 | Relay output 1 x u |
| ELG 6-1860R523 | 1 026 458 | 1860 mm | 32 | Relay output 1 x u, multiple scan |
| ELG 6-2460R521 | 1 026 183 | 2460 mm | 42 | Relay output 1 x u |

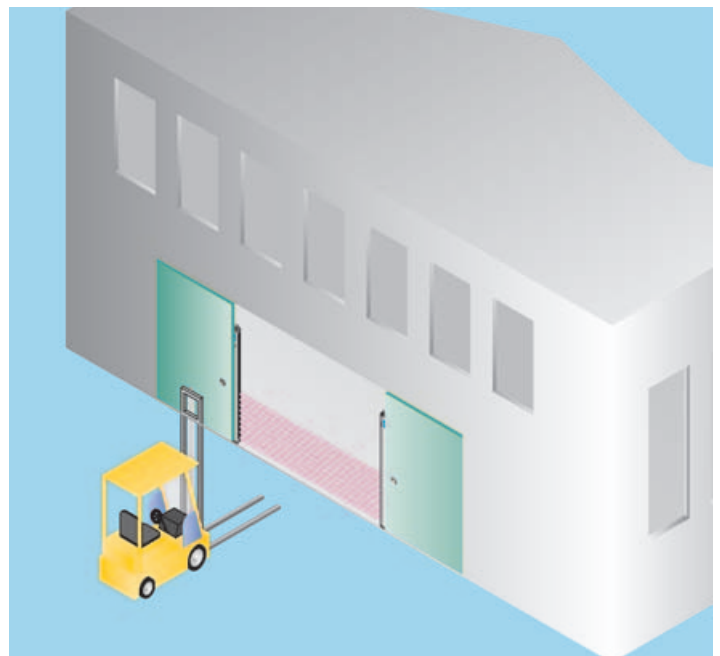



◀ If irregular objects become the norm, light grids are the first choice for error-free detection.

▼ Entries and passages are bottlenecks, often requiring special monitoring. Light grids reliably detect people, vehicles and vehicle components in automatic door systems.



▲ If the counter is to work reliably, object detection in automatic sorting systems must leave no gaps. Light grids detect even small objects passing.

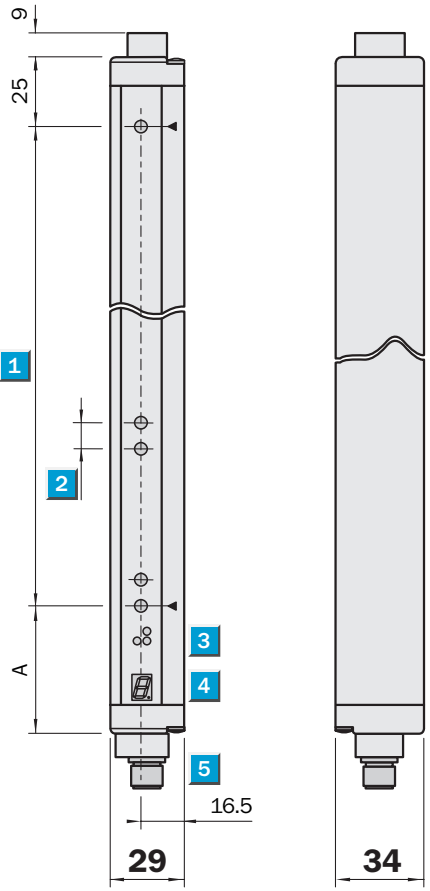



Scanning range
 0 ... 5/0 ... 8.5 m
Modular light grid

- High modularity: beam spacing, detection height and scanning range
- Compact housing
- Short response time
- Teach-in for optimal sensitivity adjustment



Dimensional drawing



Distance: MLG edge – first beam

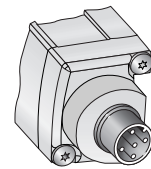
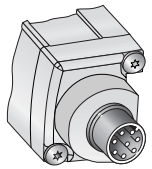
| Dimensions (mm) | A |
|---------------------------|----|
| Beam spacing 10 mm | 49 |
| Beam spacing 20 mm | 59 |
| Beam spacing 30 mm | 69 |
| Beam spacing 50 mm | 89 |

- 1** Detection height (see optical performance)
- 2** Beam spacing (10, 20, 30, 50 mm)
- 3** Status indicator: LEDs green, yellow, red
- 4** Indicator panel, 7 segment display
- 5** M12 plug, 8-pin/M12 plug, 5-pin

Connection type

MLG x-xxxx8x1

MLG x-xxxx5x1



| 8-pin, M12 | |
|--------------|----------------------|
| Sender | Receiver |
| wht 1 Sync B | wht 1 Sync B |
| brn 2 L+ | brn 2 L+ |
| grn 3 Sync A | grn 3 Sync A |
| yel 4 NC | yel 4 Teach-in |
| gra 5 TEST | gra 5 Q ₁ |
| pnk 6 NC | pnk 6 Q ₂ |
| blu 7 M | blu 7 M |
| red 8 NC | red 8 Alarm |

| 5-pin, M12 | |
|--------------|----------------------|
| Sender | Receiver |
| brn 1 L+ | brn 1 L+ |
| wht 2 Sync A | wht 2 Sync A |
| blu 3 M | blu 3 M |
| blk 4 TEST | blk 4 Q ₁ |
| gra 5 Sync B | gra 5 Sync B |

Accessories
 Cables and connectors
 Mounting systems

T-Junction NEW

| Technical data | | MLG | x-xxx xx8x1 | x-xxx xx5x1 | | | | | | | | |
|--|--|--------------------|----------------|----------------|--|--|--|--|--|--|--|--|
| Beam spacing ¹⁾ | 10 mm/20 mm/30 mm/50 mm | | | | | | | | | | | |
| Maximum number of beams | 240 beams | | | | | | | | | | | |
| Scanning range | 0 ... 5 m (max. 7 m)/0 ... 8.5 m (max. 12 m) | | | | | | | | | | | |
| Synchronization ²⁾ | By cable sync A/sync B | | | | | | | | | | | |
| Light source | LED, infrared | | | | | | | | | | | |
| Supply voltage V_S ³⁾ | 15 ... 30 V DC | | | | | | | | | | | |
| Current consumption sender | < 140 mA + 2 mA/beam | | | | | | | | | | | |
| Current consumption receiver ⁴⁾ | < 100 mA + 3 mA/beam | | | | | | | | | | | |
| Connections | M12 plug, 8-pin | | | | | | | | | | | |
| | M12 plug, 5-pin | | | | | | | | | | | |
| Teach-in | PNP: Teach > 10 V ... < V_S | | | | | | | | | | | |
| Teach-in | External Teach-in input | | | | | | | | | | | |
| | Automatic by each Power on | | | | | | | | | | | |
| Output current I_A max. | 100 mA per output | | | | | | | | | | | |
| Output load | Capacitive load: 100 nF/output | | | | | | | | | | | |
| | Inductive load: 1H/output | | | | | | | | | | | |
| Outputs/Operating mode | Q_1 dark-switching | | | | | | | | | | | |
| | \bar{Q}_2 light-switching | | | | | | | | | | | |
| Alarm output (contamination) | | | | | | | | | | | | |
| Response time ⁵⁾ | Max. 150 μ s per beam + 1 ms | | | | | | | | | | | |
| Test input »TE« | Sender OFF: Test input to V_S | | | | | | | | | | | |
| Immunity to ambient light | 50,000 lx (continuous light) | | | | | | | | | | | |
| VDE protection class | III | | | | | | | | | | | |
| Circuit protection ⁶⁾ | A, B, C | | | | | | | | | | | |
| Enclosure rating | IP 65 | | | | | | | | | | | |
| Ambient temperature T_A | Operation -25 ... +55 °C | | | | | | | | | | | |
| | Storage -40 ... +70 °C | | | | | | | | | | | |
| Mechanical resistance | Vibration: 5 g/10-55/s – IEC 68-2-6 | | | | | | | | | | | |
| | Shock: 10 g/ 10 ms – IEC 68-2-29 | | | | | | | | | | | |
| Weight | Approx. 1480 g ⁷⁾ | | | | | | | | | | | |
| Material | Housing | Aluminium anodized | | | | | | | | | | |
| | Front lens | PMMA | | | | | | | | | | |

¹⁾ Further beam spacing possible
²⁾ Sender (MLG S) and receiver (MLG E)

³⁾ Limit values
⁴⁾ Without load at $V_S = 24$ V
⁵⁾ With resistive load

⁶⁾ A = V_S connection, reverse polarity protected
 B = Outputs Q and Q short-circuit protected
 C = Interference pulse suppression

⁷⁾ For 1200 mm detection height, increment 160 g per 150 mm detection height

| | Detection height | | | Minimum Detectable Object (MDO) | |
|--------|------------------|-----------|---------|---------------------------------|--|
| | Minimum | Increment | Maximum | Beam spacing | MDO ⁸⁾ |
| | MLG 1: | 140 mm | 150 mm | 2390 mm | 10 mm |
| MLG 2: | 140 mm | 150 mm | 3140 mm | 20 mm | 25 ⁹⁾ /30 ¹⁰⁾ mm |
| MLG 3: | 120 mm | 150 mm | 3120 mm | 30 mm | 35 ⁹⁾ /40 ¹⁰⁾ mm |
| MLG 5: | 100 mm | 150 mm | 3100 mm | 50 mm | 55 ⁹⁾ /60 ¹⁰⁾ mm |

| Order information | |
|-------------------|-------------|
| Type | Order no. |
| MLG x-xxxxx8x1 | see page 18 |
| MLG x-xxxxx5x1 | see page 18 |

⁸⁾ MDO for non-moving objects measured in a direction parallel to the MLG
⁹⁾ Scanning range: 5 m
¹⁰⁾ Scanning range: 8.5 m

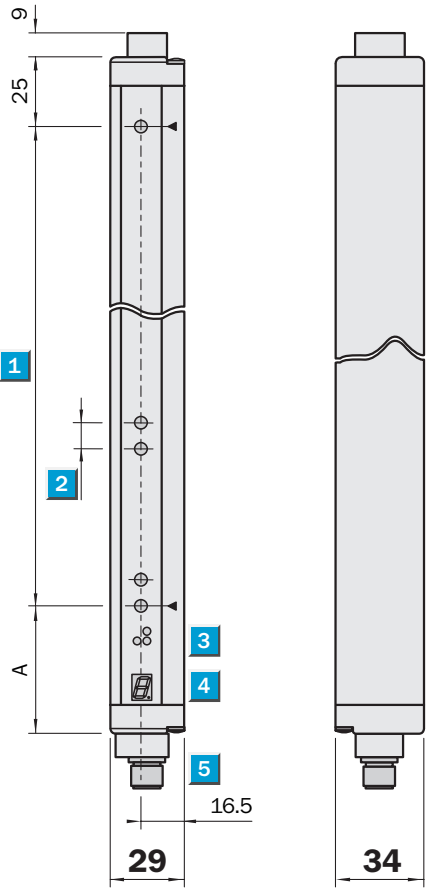
Operating range
0.5 ... 5 m

Modular light grid

- Wide selection of detection heights
- Increased resolution at mid point between sender and receiver
- Teach-in for optimal sensitivity adjustment



Dimensional drawing



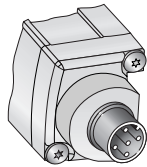
Distance: MLG edge – first beam

| Dimensions (mm) | A |
|---------------------------|----|
| Beam spacing 30 mm | 69 |
| Beam spacing 50 mm | 89 |

- 1 Detection height (see optical performance)
- 2 Beam spacing 30 mm, 50 mm
- 3 Status indicator: LED green, yellow, red
- 4 Indicator panel, 7 segment display
- 5 M12 plug, 5-pin

Connection type

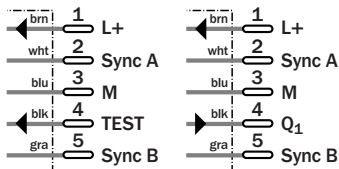
MLG x-xxxxF513



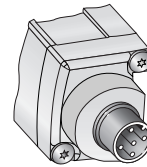
5-pin, M12

Sender

Receiver



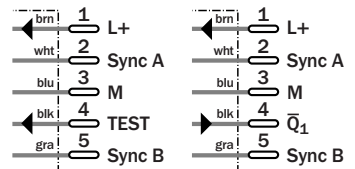
MLG x-xxxxF51L



5-pin, M12

Sender

Receiver



- Accessories**
- Cables and connectors
 - Mounting systems

T-Junction



| Technical data | | MLG | 5-xxx F513 | 5-xxx F51L | 3-xxx F513 | | | | | | |
|---|--|--------------------|---------------|---------------|---------------|--|--|--|--|--|--|
| Beam spacing ¹⁾ | 30 mm | | | | | | | | | | |
| | 50 mm | | | | | | | | | | |
| Number of beams/ | | | | | | | | | | | |
| Detection height | See order information | | | | | | | | | | |
| Scanning range | 0.5 ... 5 m | | | | | | | | | | |
| Synchronization mode ²⁾ | Synchronized by cable sync A/sync B | | | | | | | | | | |
| Light source | LED, infrared light | | | | | | | | | | |
| Supply voltage V _S ³⁾ | 15 ... 30 V DC | | | | | | | | | | |
| Residual ripple | < 5 V _{PP} within V _S tolerances | | | | | | | | | | |
| Current consumption sender | < 140 mA + 2 mA/beam | | | | | | | | | | |
| Current consumption receiver ⁴⁾ | < 100 mA + 3 mA/beam | | | | | | | | | | |
| Connection | M12 plug, 5-pin | | | | | | | | | | |
| Switching output | PNP, Q ₁ dark-switching | | | | | | | | | | |
| | PNP, Q ₁ light-switching | | | | | | | | | | |
| Teach-in | Automatic by each Power on | | | | | | | | | | |
| Output current I _A max. | 100 mA | | | | | | | | | | |
| Output load | Capacitive load: 100 nF/output | | | | | | | | | | |
| | Inductive load: 1 H/output | | | | | | | | | | |
| Operation mode | Q ₁ dark-switching ⁵⁾ | | | | | | | | | | |
| Response time ⁶⁾ | 0.5 ms per beam + 3 ms | | | | | | | | | | |
| Test input »TE« | Sender OFF: Test input to V _S | | | | | | | | | | |
| Immunity to ambient light | 50,000 lx (continuous light) | | | | | | | | | | |
| VDE protection class | III | | | | | | | | | | |
| Circuit protection ⁷⁾ | A, B, C | | | | | | | | | | |
| Enclosure rating | IP 65 | | | | | | | | | | |
| Ambient temperature T _A | Operation -25 ... +55 °C | | | | | | | | | | |
| | Storage -40 ... +70 °C | | | | | | | | | | |
| Mechanical resistance | Vibration: 5 g/10-55/s – IEC 68-2-6 | | | | | | | | | | |
| | Shock: 10 g/10 ms – IEC 68-2-29 | | | | | | | | | | |
| Weight | 580 ... 2300 g | | | | | | | | | | |
| Material | Housing | Aluminium anodized | | | | | | | | | |
| | Front lens | PMMA | | | | | | | | | |

- 1) Further beam spacing possible
- 2) Sender (MLG S) and receiver (MLG E)
- 3) Limit values
- 4) Without load at V_S = 24 V
- 5) Or customized

- 6) With resistive load
- 7) A = V_S connection, reverse polarity protected
B = Outputs Q and Q short-circuit protected
C = Interference pulse suppression

| Optical performance | | | | | | |
|---------------------|------------------|-----------|---------|---|-------------------------------|---|
| | Detection height | | | MDO: Minimum Detectable Object ⁸⁾ with multiple scan | | |
| | Minimum | Increment | Maximum | Beam spacing | In front of MLG S or MLG E | At mid point between MLG S and MLG E |
| MLG 3: | 120 mm | 150 mm | 3120 mm | 30 mm | 35 mm | < 20 mm |
| MLG 5: | 100 mm | 150 mm | 3100 mm | 50 mm | 55 mm | < 30 mm |

⁸⁾ MDO for non-moving objects measured in a direction parallel to the MLG

| Order information | |
|-------------------|-------------|
| Type | Order no. |
| MLG 5-xxx F513 | see page 19 |
| MLG 5-xxx F51L | see page 19 |
| MLG 3-xxx F513 | see page 19 |

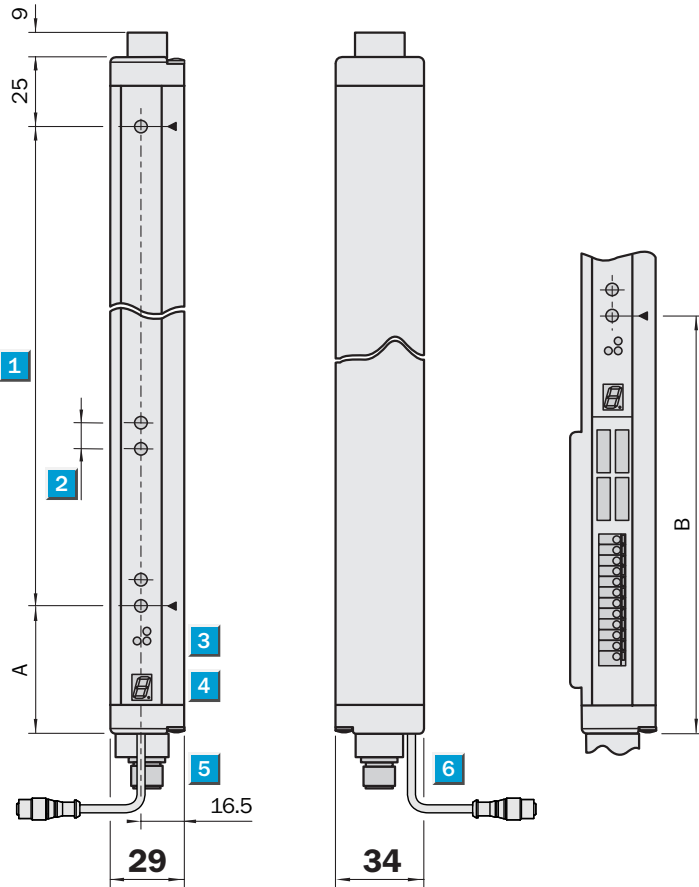
Operating range
0 ... 5 m/0 ... 8.5 m

Modular light grid

- High modularity: beam spacing, detection height, scanning range and interface
- Compact housing
- Short response time
- Teach-in for optimal sensitivity adjustment
- MLGsetup software for visualisation and parameterisation (included)



Dimensional drawing



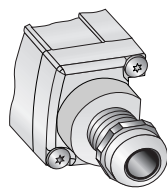
Distance: MLG edge – first beam

| Dimensions (mm) | A | B |
|--------------------|----|-----|
| MLG 1 10 mm | 49 | 160 |
| MLG 2 20 mm | 59 | 170 |
| MLG 3 30 mm | 69 | 180 |
| MLG 5 50 mm | 89 | 200 |

- 1** Detection height (see optical performance)
- 2** Beam spacing 10, 20, 30, 50 mm
- 3** Status indicator: LED green, yellow, red
- 4** Indicator panel, 7 segment display
- 5** PG9/M12 plug, 8-pin
- 6** Configuration M8 plug, 4-pin

Connection type

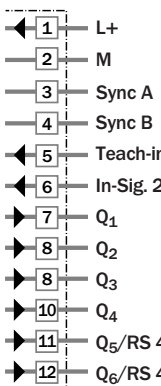
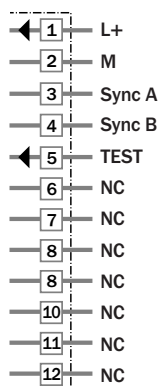
MLG x-xxxx2x2



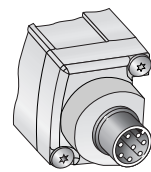
PG9, terminals

Sender

Receiver



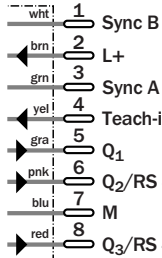
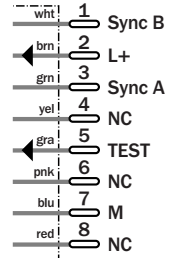
MLG x-xxxx8x2



8-pin, M12

Sender

Receiver



Accessories

| |
|-----------------------|
| Cables and connectors |
| Mounting systems |
| MLGsetup Software* |
| Parametering cable |

* Included with delivery

T-Junction



| Technical data | | MLG | 1) | | | | | | | | |
|---|---|-----|----|--|--|--|--|--|--|--|--|
| Maximum number of beams | 240 beams | | | | | | | | | | |
| Scanning range | 0 ... 5 m/0 ... 8.5 m | | | | | | | | | | |
| Synchronization mode 2) | Synchronized by cable sync A/sync B | | | | | | | | | | |
| Supply voltage V _S 3) | 15 ... 30 V DC | | | | | | | | | | |
| Current consumption sender | < 140 mA + 2 mA/beam | | | | | | | | | | |
| Current consumption receiver 4) | < 100 mA + 3 mA/beam | | | | | | | | | | |
| Teach-in | PNP: Teach > 10 V ... < V _S | | | | | | | | | | |
| Teach-in | External Teach-in input | | | | | | | | | | |
| Output current I _A max. | 100 mA per output 5) | | | | | | | | | | |
| Output load | Capacitive load: 100 nF/output Inductive load: 1H/output | | | | | | | | | | |
| Operating mode outputs | Configurable with MLGsetup 6) | | | | | | | | | | |
| Response time 7) | Default 150 μs per beam + 1 ms 8) | | | | | | | | | | |
| Alarm outputs (configurable) | Default setting on Q ₃ | | | | | | | | | | |
| Data interface | RS 485 9) | | | | | | | | | | |
| Configuration plug 10) | 4-pin, M8 plug, RS 232: 9.6 kBaud fix 11) | | | | | | | | | | |
| Test input »TE« (sender) | Sender OFF: Test input to V _S | | | | | | | | | | |
| Immunity to ambient light | 50,000 lx (continuous light) | | | | | | | | | | |
| VDE protection class | III | | | | | | | | | | |
| Circuit protection 12) | A, B, C | | | | | | | | | | |
| Enclosure rating | IP 65 | | | | | | | | | | |
| Ambient temperature T _A | Operation -25 ... +55 °C Storage -40 ... +70 °C | | | | | | | | | | |
| Mechanical resistance | Vibration: 5 g/10-55/s – IEC 68-2-6 Shock: 10 g/ 10 ms – IEC 68-2-29 | | | | | | | | | | |
| Weight (with PG9) | Approx. 1480 g 13) | | | | | | | | | | |
| Material | Housing Aluminium anodized Front lens PMMA | | | | | | | | | | |

- 1) See order informations
2) Sender (MLG S) and receiver (MLG E)
3) Limit values
4) Without load at V_S = 24 V

- 5) Max. Σ = 550 mA
6) Default settings as MLG Standard
7) With resistive load
8) Depends on selected basic function
9) Configurable per MLGsetup

- 10) Plug built on receiver (MLG E)
11) For visualisation and configuration with MLGsetup

- 12) A = V_S connection, reverse polarity protected
B = Outputs short-circuit protected
C = Interference pulse suppression
13) For 1200 mm detection height, increment 160 g per 150 mm detection height

| Optical performance | | | | | | |
|---------------------|------------------|-----------|---------|------------------------------------|---------------------------------------|--|
| | Detection height | | | MDO: Minimum Detectable Object 14) | | |
| | Minimum | Increment | Maximum | Beam spacing | MDO | MDO with multiple scan 15) |
| MLG 1: | 140 mm | 150 mm | 2390 mm | 10 mm | 15 ¹⁶ /20 ¹⁷ mm | < 10 ¹⁶ / < 15 ¹⁷ mm |
| MLG 2: | 140 mm | 150 mm | 3140 mm | 20 mm | 25 ¹⁶ /30 ¹⁷ mm | < 15 ¹⁶ / < 20 ¹⁷ mm |
| MLG 3: | 120 mm | 150 mm | 3120 mm | 30 mm | 35 ¹⁶ /40 ¹⁷ mm | < 20 ¹⁶ / < 25 ¹⁷ mm |
| MLG 5: | 100 mm | 150 mm | 3100 mm | 50 mm | 55 ¹⁶ /60 ¹⁷ mm | < 30 ¹⁶ / < 35 ¹⁷ mm |

- 14) MDO for non-moving objects measured in a direction parallel to the MLG

- 15) At the mid point between the sender and receiver. Multiple scan usage will reduce response time.

- 16) Scanning range: 5 m
17) Scanning range: 8.5 m

Order information *

Operating range = 0 ... 5 m/beam spacing 10 mm/MLG Standard

| Type | Order no. | Height | Beams | Switching outputs |
|----------------|-----------|--------|-------|-------------------|
| MLG 1-0140F511 | 1 024 259 | 140 mm | 15 | 1 x PNP, Q |
| MLG 1-0290F511 | 1 023 670 | 290 mm | 30 | 1 x PNP, Q |
| MLG 1-0440F511 | 1 026 260 | 440 mm | 45 | 1 x PNP, Q |
| MLG 1-0590F511 | 1 025 650 | 590 mm | 60 | 1 x PNP, Q |

Operating range = 0 ... 5 m/beam spacing 20 mm/MLG Standard

| Type | Order no. | Height | Beams | Switching outputs |
|----------------|-----------|---------|-------|-------------------|
| MLG 2-0140F511 | 1 024 306 | 140 mm | 8 | 1 x PNP, Q |
| MLG 2-0280F511 | 1 023 372 | 280 mm | 15 | 1 x PNP, Q |
| MLG 2-0440F511 | 1 023 560 | 440 mm | 23 | 1 x PNP, Q |
| MLG 2-2380F511 | 1 023 572 | 2380 mm | 120 | 1 x PNP, Q |

Operating range = 0 ... 5 m/beam spacing 30 mm/MLG Standard

| Type | Order no. | Height | Beams | Switching outputs |
|----------------|-----------|---------|-------|-------------------|
| MLG 3-0270F511 | 1 023 671 | 270 mm | 10 | 1 x PNP, Q |
| MLG 3-0420F511 | 1 022 103 | 420 mm | 15 | 1 x PNP, Q |
| MLG 3-1470F511 | 1 022 102 | 1470 mm | 50 | 1 x PNP, Q |
| MLG 3-1620F511 | 1 025 716 | 1620 mm | 55 | 1 x PNP, Q |
| MLG 3-2220F511 | 1 023 561 | 2220 mm | 75 | 1 x PNP, Q |

Operating range = 0 ... 5 m/beam spacing 50 mm/MLG Standard

| Type | Order no. | Height | Beams | Switching outputs |
|----------------|-----------|---------|-------|---|
| MLG 5-0250F511 | 1 025 852 | 250 mm | 6 | 1 x PNP, Q |
| MLG 5-0400E511 | 1 023 766 | 400 mm | 9 | 1 x PNP, Q |
| MLG 5-0400F511 | 1 023 440 | 400 mm | 9 | 1 x PNP, Q |
| MLG 5-0550F811 | 1 023 573 | 550 mm | 12 | 2 x PNP, Q u. \bar{Q} , Alarm, Teach-in input |
| MLG 5-0700F511 | 1 022 867 | 700 mm | 15 | 1 x PNP, Q |
| MLG 5-0700F811 | 1 025 853 | 700 mm | 15 | 2 x PNP, Q u. \bar{Q} , Alarm, Teach-in input |
| MLG 5-1000F511 | 1 023 538 | 1000 mm | 21 | 1 x PNP, Q |
| MLG 5-1150F511 | 1 023 643 | 1150 mm | 24 | 1 x PNP, Q |
| MLG 5-1450F511 | 1 023 738 | 1450 mm | 30 | 1 x PNP, Q |
| MLG 5-1600F511 | 1 025 448 | 1600 mm | 33 | 1 x PNP, Q |

Operating range = 0 ... 8.5 m/MLG Standard

| Type | Order no. | Height | Beams | Beam spacing | Switching outputs |
|----------------|-----------|--------|-------|--------------|---|
| MLG 1-0140F521 | 1 026 370 | 140 mm | 15 | 10 mm | 1 x PNP, Q |
| MLG 3-0120F521 | 1 023 008 | 120 mm | 5 | 30 mm | 1 x PNP, Q |
| MLG 1-0290F521 | 1 024 123 | 290 mm | 30 | 10 mm | 1 x PNP, Q |
| MLG 5-0700F521 | 1 025 854 | 700 mm | 15 | 50 mm | 1 x PNP, Q |
| MLG 3-0870F521 | 1 023 003 | 870 mm | 30 | 30 mm | 1 x PNP, Q |
| MLG 3-0870F821 | 1 024 163 | 290 mm | 30 | 10 mm | 2 x PNP, Q u. \bar{Q} , Alarm, Teach-in input |

* additional types on request

Order information *

Operating range = 0 ... 5 m/with multiple scan function

| Type | Order no. | Height | Beams | Beam spacing | Switching outputs |
|----------------|-----------|---------|-------|--------------|--------------------|
| MLG 5-0250F513 | 1 022 646 | 250 mm | 6 | 50 mm | 1 x PNP, Q |
| MLG 5-0550F513 | 1 022 647 | 550 mm | 12 | 50 mm | 1 x PNP, Q |
| MLG 5-0700F513 | 1 022 648 | 700 mm | 15 | 50 mm | 1 x PNP, Q |
| MLG 5-1000F513 | 1 022 649 | 1000 mm | 21 | 50 mm | 1 x PNP, Q |
| MLG 5-1150F513 | 1 022 650 | 1150 mm | 24 | 50 mm | 1 x PNP, Q |
| MLG 5-1450F513 | 1 022 642 | 1450 mm | 30 | 50 mm | 1 x PNP, Q |
| MLG 5-1750F513 | 1 022 651 | 1750 mm | 36 | 50 mm | 1 x PNP, Q |
| MLG 5-1900F513 | 1 022 652 | 1900 mm | 39 | 50 mm | 1 x PNP, Q |
| MLG 5-2050F513 | 1 022 653 | 2050 mm | 42 | 50 mm | 1 x PNP, Q |
| MLG 3-2220F513 | 1 022 870 | 2225 mm | 75 | 30 mm | 1 x PNP, Q |
| MLG 3-2370F513 | 1 022 935 | 2370 mm | 80 | 30 mm | 1 x PNP, Q |
| MLG 5-0250F51L | 1 023 622 | 250 mm | 6 | 50 mm | 1 x PNP, \bar{Q} |
| MLG 5-0550F51L | 1 023 623 | 550 mm | 12 | 50 mm | 1 x PNP, \bar{Q} |
| MLG 5-0700F51L | 1 023 624 | 700 mm | 15 | 50 mm | 1 x PNP, \bar{Q} |
| MLG 5-1000F51L | 1 023 625 | 1000 mm | 21 | 50 mm | 1 x PNP, \bar{Q} |
| MLG 5-1150F51L | 1 023 626 | 1150 mm | 24 | 50 mm | 1 x PNP, \bar{Q} |
| MLG 5-1450F51L | 1 023 627 | 1450 mm | 30 | 50 mm | 1 x PNP, \bar{Q} |
| MLG 5-1750F51L | 1 023 628 | 1750 mm | 36 | 50 mm | 1 x PNP, \bar{Q} |
| MLG 5-1900F51L | 1 023 629 | 1900 mm | 39 | 50 mm | 1 x PNP, \bar{Q} |
| MLG 5-1900F52L | 1 023 957 | 1900 mm | 39 | 50 mm | 1 x PNP, \bar{Q} |
| MLG 5-2050F51L | 1 023 630 | 2050 mm | 42 | 50 mm | 1 x PNP, \bar{Q} |

Operating range = 0 ... 5 m/beam spacing 10 mm/with plug/Type: programmable with MLGsetup

| Type | Order no. | Height | Beams | Switching outputs |
|----------------|-----------|---------|-------|---------------------------|
| MLG 1-0140I812 | 1 022 573 | 140 mm | 15 | 1 x PNP, RS 485, 1 input |
| MLG 1-0140F812 | 1 022 147 | 140 mm | 15 | 3 x PNP, 1 input |
| MLG 1-0290F812 | 1 022 166 | 290 mm | 30 | 3 x PNP, 1 input |
| MLG 1-0290I812 | 1 025 943 | 290 mm | 30 | 1 x PNP, RS 485, 1 input |
| MLG 1-0440F812 | 1 022 294 | 440 mm | 45 | 3 x PNP, 1 input |
| MLG 1-0440I812 | 1 024 038 | 440 mm | 45 | 1 x PNP, RS 485, 1 input |
| MLG 1-0590F812 | 1 023 581 | 590 mm | 60 | 3 x PNP, 1 input |
| MLG 1-0590I812 | 1 022 167 | 590 mm | 60 | 1 x PNP, RS 485, 1 input |
| MLG 1-0740F812 | 1 023 031 | 740 mm | 75 | 3 x PNP, 1 input |
| MLG 1-0740I812 | 1 023 558 | 740 mm | 75 | 1 x PNP, RS 485, 1 input |
| MLG 1-0890I812 | 1 023 557 | 890 mm | 90 | 1 x PNP, RS 485, 1 input |
| MLG 1-1190F812 | 1 022 159 | 1190 mm | 120 | 3 x PNP, 1 input |
| MLG 1-1340I812 | 1 022 712 | 1340 mm | 135 | 1 x PNP, RS 485, 1 input |
| MLG 1-1640F812 | 1 022 168 | 1640 mm | 165 | 3 x PNP, 1 input |
| MLG 1-1640I812 | 1 024 294 | 1640 mm | 165 | 1 x PNP, RS 485, 1 input |
| MLG 1-1940F812 | 1 025 839 | 1940 mm | 195 | 3 x PNP, 1 input |
| MLG 1-2090T812 | 1 026 417 | 2090 mm | 210 | 1 x NPN, RS 485, 1 input |
| MLG 1-2390I812 | 1 023 839 | 2390 mm | 240 | 1 x NPN, RS 485, 1 input |
| MLG 1-2390I212 | 1 025 980 | 2390 mm | 240 | 4 x PNP, RS 485, 2 inputs |
| MLG 1-2390F812 | 1 023 453 | 2390 mm | 240 | 3 x PNP, 1 input |

* additional types on request

Order information *

Operating range = 0 ... 5 m/beam spacing 10 mm/with terminal chamber/Type: programmable with MLGsetup

| Type | Order no. | Height | Beams | Switching outputs |
|----------------|-----------|---------|-------|-----------------------------------|
| MLG 1-0140I212 | 1 026 223 | 140 mm | 15 | RS 485, 4 x PNP outputs, 2 inputs |
| MLG 1-0590F212 | 1 023 373 | 590 mm | 60 | 6 x PNP, 2 inputs |
| MLG 1-0590I212 | 1 023 979 | 590 mm | 60 | RS 485, 4 x PNP outputs, 2 inputs |
| MLG 1-0740I212 | 1 023 583 | 740 mm | 75 | RS 485, 4 x PNP outputs, 2 inputs |
| MLG 1-0890F212 | 1 022 179 | 890 mm | 90 | 6 x PNP, 2 inputs |
| MLG 1-1040I212 | 1 023 584 | 1040 mm | 105 | RS 485, 4 x PNP outputs, 2 inputs |
| MLG 1-1340F212 | 1 023 582 | 1340 mm | 135 | 6 x PNP, 2 inputs |

Operating range = 0 ... 5 m/beam spacing 20 mm/with plug/Type: programmable with MLGsetup

| Type | Order no. | Height | Beams | Switching outputs |
|----------------|-----------|---------|-------|--------------------------|
| MLG 2-0140F812 | 1 025 653 | 140 mm | 8 | 3 x PNP, 1 input |
| MLG 2-0280F812 | 1 023 585 | 280 mm | 15 | 3 x PNP, 1 input |
| MLG 2-0280I812 | 1 023 589 | 280 mm | 15 | 1 x PNP, RS 485, 1 input |
| MLG 2-0580F812 | 1 023 555 | 580 mm | 30 | 3 x PNP, 1 input |
| MLG 2-0580I812 | 1 023 789 | 580 mm | 30 | 1 x PNP, RS 485, 1 input |
| MLG 2-0740I812 | 1 022 855 | 740 mm | 38 | 1 x PNP, RS 485, 1 input |
| MLG 2-0880F812 | 1 023 586 | 880 mm | 45 | 3 x PNP, 1 input |
| MLG 2-0880I812 | 1 023 590 | 880 mm | 45 | 1 x PNP, RS 485, 1 input |
| MLG 2-1180F812 | 1 023 587 | 1180 mm | 60 | 3 x PNP, 1 input |
| MLG 2-1480F812 | 1 023 588 | 1480 mm | 75 | 3 x PNP, 1 input |
| MLG 2-1480I812 | 1 023 591 | 1480 mm | 75 | 1 x PNP, RS 485, 1 input |
| MLG 2-1940F812 | 1 025 855 | 1940 mm | 98 | 3 x PNP, 1 input |
| MLG 2-1940I812 | 1 023 559 | 1940 mm | 98 | 1 x PNP, RS 485, 1 input |
| MLG 2-2080I812 | 1 026 310 | 2080 mm | 105 | 3 x PNP, 1 input |
| MLG 2-2080I812 | 1 026 495 | 2080 mm | 105 | 1 x PNP, RS 485, 1 input |
| MLG 2-2240I812 | 1 025 444 | 2240 mm | 113 | 1 x PNP, RS 485, 1 input |
| MLG 2-2540I812 | 1 024 248 | 2540 mm | 128 | 1 x PNP, RS 485, 1 input |

Operating range = 0 ... 5 m/beam spacing 20 mm/with terminal chamber/Type: programmable with MLGsetup

| Type | Order no. | Height | Beams | Switching outputs |
|----------------|-----------|---------|-------|-----------------------------------|
| MLG 2-0140F212 | 1 023 592 | 140 mm | 8 | 6 x PNP outputs, 2 inputs |
| MLG 2-0440I212 | 1 023 595 | 440 mm | 23 | RS 485, 4 x PNP outputs, 2 inputs |
| MLG 2-1040F212 | 1 023 593 | 1040 mm | 53 | 6 x PNP outputs, 2 inputs |
| MLG 2-1640F212 | 1 023 594 | 1640 mm | 83 | 6 x PNP outputs, 2 inputs |
| MLG 2-1780F212 | 1 024 063 | 1780 mm | 90 | 6 x PNP outputs, 2 inputs |
| MLG 2-0740I212 | 1 023 596 | 740 mm | 38 | RS 485, 4 x PNP outputs, 2 inputs |
| MLG 2-2240I212 | 1 023 597 | 2240 mm | 113 | RS 485, 4 x PNP outputs, 2 inputs |
| MLG 2-2240F212 | 1 022 606 | 2240 mm | 113 | 6 x PNP, 2 inputs |
| MLG 2-3140I212 | 1 022 096 | 3140 mm | 158 | RS 485, 4 x PNP outputs, 2 inputs |

* additional types on request

Order information *

Operating range = 0 ... 5 m/beam spacing 30 mm/with plug/Type: programmable with MLGsetup

| Type | Order no. | Height | Beams | Switching outputs |
|----------------|-----------|---------|-------|--------------------------|
| MLG 3-0420F812 | 1 023 598 | 420 mm | 15 | 3 x PNP, 1 input |
| MLG 3-0570F812 | 1 023 980 | 570 mm | 20 | 3 x PNP, 1 input |
| MLG 3-0720I812 | 1 025 635 | 720 mm | 25 | 1 x PNP, RS 485, 1 input |
| MLG 3-0870I812 | 1 026 172 | 870 mm | 30 | 1 x PNP, RS 485, 1 input |
| MLG 3-1020F812 | 1 022 169 | 1020 mm | 35 | 3 x PNP, 1 input |
| MLG 3-1320F812 | 1 026 347 | 1320 mm | 45 | 3 x PNP, 1 input |
| MLG 3-1470F812 | 1 023 556 | 1470 mm | 50 | 3 x PNP, 1 input |
| MLG 3-1470I812 | 1 023 642 | 1470 mm | 50 | 1 x PNP, RS 485, 1 input |
| MLG 3-1770F812 | 1 024 109 | 1770 mm | 50 | 3 x PNP, 1 input |
| MLG 3-1920I812 | 1 023 392 | 1920 mm | 65 | 1 x PNP, RS 485, 1 input |
| MLG 3-2070F812 | 1 022 292 | 2070 mm | 70 | 3 x PNP, 1 input |
| MLG 3-2220F812 | 1 022 173 | 2220 mm | 75 | 3 x PNP, 1 input |
| MLG 3-2670F812 | 1 023 599 | 2670 mm | 90 | 3 x PNP, 1 input |
| MLG 3-2820F812 | 1 022 174 | 2820 mm | 95 | 3 x PNP, 1 input |
| MLG 3-3120F812 | 1 023 780 | 3120 mm | 105 | 3 x PNP, 1 input |
| MLG 3-3120I812 | 1 024 071 | 3120 mm | 105 | 1 x PNP, RS 485, 1 input |

Operating range = 0 ... 5 m/beam spacing 30 mm/with terminal chamber/Type: programmable with MLGsetup

| Type | Order no. | Height | Beams | Switching outputs |
|----------------|-----------|---------|-------|---------------------------|
| MLG 3-1770F212 | 1 023 600 | 1770 mm | 60 | 6 x PNP outputs, 2 inputs |
| MLG 3-2070F212 | 1 023 601 | 2070 mm | 70 | 6 x PNP outputs, 2 inputs |
| MLG 3-2220F212 | 1 024 158 | 2220 mm | 75 | 6 x PNP outputs, 2 inputs |
| MLG 3-2820F212 | 1 023 602 | 2820 mm | 95 | 6 x PNP outputs, 2 inputs |

Operating range = 0 ... 5 m/beam spacing 50 mm/with plug/Type: programmable with MLGsetup

| Type | Order no. | Height | Beams | Switching outputs |
|----------------|-----------|---------|-------|--------------------------|
| MLG 5-0100T812 | 1 026 233 | 100 mm | 3 | 1 x NPN, RS 485, 1 input |
| MLG 5-0250F812 | 1 023 603 | 250 mm | 6 | 3 x PNP, 1 input |
| MLG 5-0250I812 | 1 023 607 | 250 mm | 6 | 1 x PNP, RS 485, 1 input |
| MLG 5-0550F812 | 1 024 267 | 550 mm | 12 | 3 x PNP, 1 input |
| MLG 5-0700F812 | 1 022 175 | 700 mm | 15 | 3 x PNP, 1 input |
| MLG 5-0850I812 | 1 024 058 | 850 mm | 18 | 1 x PNP, RS 485, 1 input |
| MLG 5-1150F812 | 1 022 176 | 1150 mm | 24 | 3 x PNP, 1 input |
| MLG 5-1300I812 | 1 023 432 | 1300 mm | 27 | 1 x PNP, RS 485, 1 input |
| MLG 5-1450F812 | 1 023 604 | 1450 mm | 30 | 3 x PNP, 1 input |
| MLG 5-1450I812 | 1 023 608 | 1450 mm | 30 | 1 x PNP, RS 485, 1 input |
| MLG 5-1600F812 | 1 022 177 | 1600 mm | 33 | 3 x PNP, 1 input |
| MLG 5-1600I812 | 1 026 294 | 1600 mm | 33 | 1 x PNP, RS 485, 1 input |
| MLG 5-1600E812 | 1 024 070 | 1600 mm | 33 | 3 x NPN, 1 input |
| MLG 5-1900F812 | 1 023 605 | 1900 mm | 40 | 3 x PNP, 1 input |
| MLG 5-1900I812 | 1 023 956 | 1900 mm | 40 | 1 x PNP, RS 485, 1 input |
| MLG 5-2350F812 | 1 022 178 | 2350 mm | 48 | 3 x PNP, 1 input |
| MLG 5-2800F812 | 1 023 606 | 2800 mm | 57 | 3 x PNP, 1 input |
| MLG 5-2800I812 | 1 023 609 | 2800 mm | 57 | 1 x PNP, RS 485, 1 input |
| MLG 5-3100F812 | 1 023 803 | 3100 mm | 63 | 3 x PNP, 1 input |

* additional types on request

Order information *

Operating range = 0 ... 5 m/beam spacing 50 mm/with terminal chamber/Type: programmable with MLGsetup

| Type | Order no. | Height | Beams | Switching outputs |
|----------------|-----------|---------|-------|---------------------------|
| MLG 5-0850F212 | 1 023 610 | 850 mm | 18 | 6 x PNP, 2 inputs |
| MLG 5-1000I212 | 1 023 614 | 1000 mm | 21 | 4 x PNP, RS 485, 2 inputs |
| MLG 5-1150F212 | 1 025 336 | 1150 mm | 24 | 6 x PNP, 2 inputs |
| MLG 5-1150I812 | 1 026 238 | 1150 mm | 24 | 1 x PNP, RS 485, 1 input |
| MLG 5-1450F212 | 1 025 254 | 1450 mm | 30 | 6 x PNP, 2 inputs |
| MLG 5-1450I212 | 1 023 615 | 1450 mm | 30 | 4 x PNP, RS 485, 2 inputs |
| MLG 5-1600F212 | 1 023 611 | 1600 mm | 33 | 6 x PNP, 2 inputs |
| MLG 5-1750F212 | 1 025 327 | 1750 mm | 36 | 6 x PNP, 2 inputs |
| MLG 5-1750E212 | 1 025 297 | 1750 mm | 36 | 6 x NPN, 2 inputs |
| MLG 5-1900F212 | 1 025 341 | 1900 mm | 39 | 6 x PNP, 2 inputs |
| MLG 5-2050F212 | 1 025 345 | 2050 mm | 42 | 6 x PNP, 2 inputs |
| MLG 5-2200F212 | 1 023 612 | 2200 mm | 45 | 6 x PNP, 2 inputs |
| MLG 5-2350F212 | 1 024 124 | 2350 mm | 48 | 6 x PNP, 2 inputs |
| MLG 5-2500F212 | 1 023 613 | 2500 mm | 51 | 6 x PNP, 2 inputs |
| MLG 5-2500I212 | 1 023 358 | 2500 mm | 51 | 4 x PNP, RS 485, 2 inputs |

Operating range = 0 ... 8.5 m/Type: programmable with MLGsetup

| Type | Order no. | Height | Beams | Switching outputs |
|----------------|-----------|---------|-------|---------------------------|
| MLG 1-0290I822 | 1 022 572 | 290 mm | 30 | 1 x PNP, RS 485, 1 input |
| MLG 1-0590I822 | 1 023 872 | 590 mm | 60 | 1 x PNP, RS 485, 1 input |
| MLG 3-0870F822 | 1 023 841 | 870 mm | 30 | 3 x PNP, 1 input |
| MLG 3-1770I822 | 1 023 800 | 1770 mm | 60 | 1 x PNP, RS 485, 1 input |
| MLG 2-1940I822 | 1 024 289 | 1940 mm | 98 | 1 x PNP, RS 485, 1 input |
| MLG 1-1940I812 | 1 025 940 | 1940 mm | 195 | 1 x PNP, RS 485, 1 input |
| MLG 5-2350F822 | 1 025 461 | 2350 mm | 48 | 1 x PNP, RS 485, 1 input |
| MLG 1-2390I822 | 1 025 817 | 2390 mm | 240 | 3 x PNP, 1 input |
| MLG 5-2800I822 | 1 025 774 | 2800 mm | 57 | 1 x PNP, RS 485, 1 input |
| MLG 3-2820F822 | 1 025 773 | 2820 mm | 95 | 1 x PNP, RS 485, 1 input |
| MLG 3-3120F822 | 1 025 597 | 3120 mm | 105 | 6 x PNP, 2 inputs |
| MLG 2-3140I222 | 1 025 421 | 3140 mm | 158 | 4 x PNP, RS 485, 2 inputs |

* additional types on request

| Type | Interfaces |
|------|--|
| F8x2 | 3 x PNP-outputs, 1 input |
| F2x2 | 6 x PNP-outputs, 2 inputs |
| I8x2 | RS 485 data interface, 1 x PNP-output, 1 input |
| I2x2 | RS 485 data interface, 4 x PNP-outputs, 2 inputs |

Dimensional drawings and order information

Cables and connectors MLG

To connect MLG S at MLG E and PLC

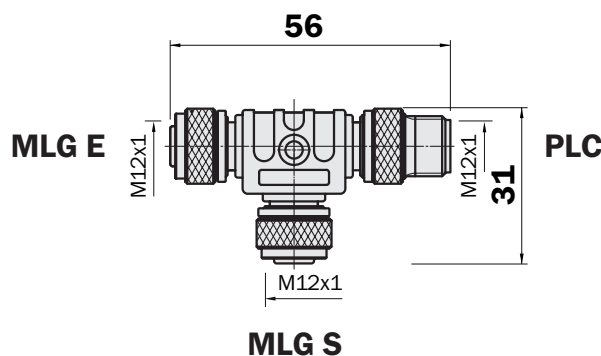
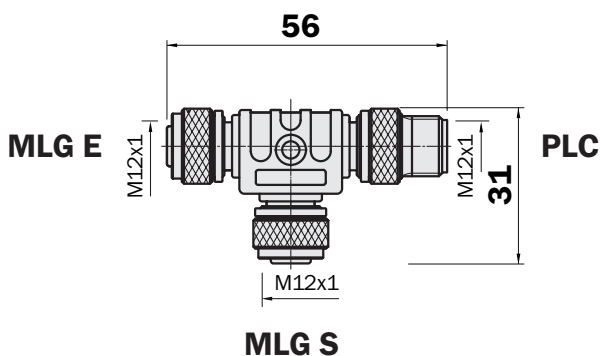


T-Junction M12, 5-pin

| Type | Order no. |
|--------------|-----------|
| SBO-02G12-SM | 6 029 305 |

T-Junction M12, 8-pin

| Type | Order no. |
|--------------|-----------|
| SBO-02F12-SM | 6 029 306 |



SENSICK screw-in system M12, 8-pin, enclosure rating IP 67

Female connector M12, 8-pin, straight, shielded

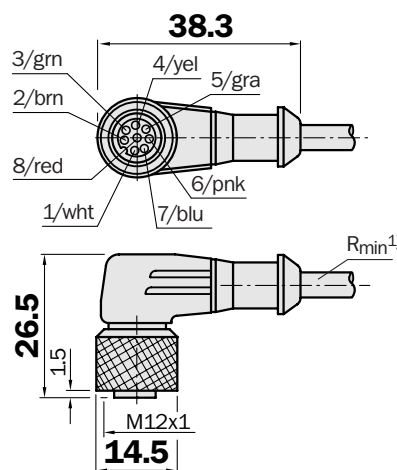
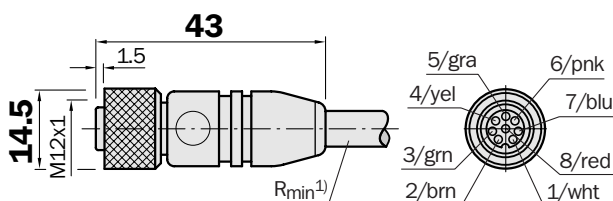
Cable diameter 6.6 mm, 8 x 0.25 mm², sheath PVC

| Type | Order no. | Cable length |
|----------------|-----------|--------------|
| DOL-1208-G02MA | 6 020 633 | 2 m |
| DOL-1208-G05MA | 6 020 993 | 5 m |
| DOL-1208-G10MA | 6 022 152 | 10 m |
| DOL-1208-G15MA | 6 022 153 | 15 m |

Female connector M12, 8-pin, right angle, shielded

Cable diameter 6.6 mm, 8 x 0.25 mm², sheath PVC

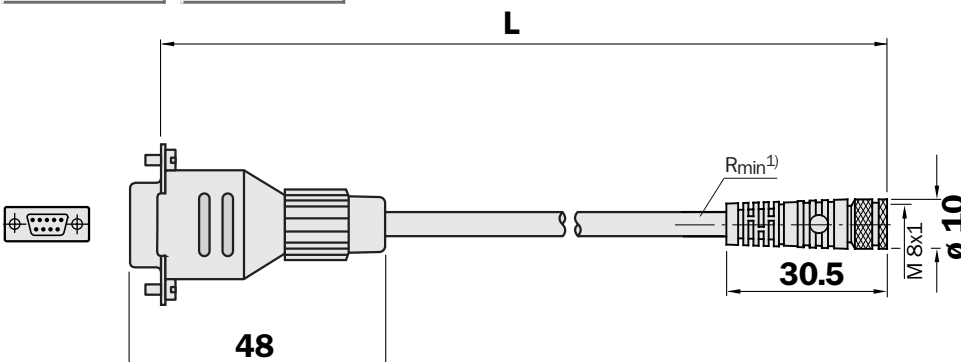
| Type | Order no. | Cable length |
|----------------|-----------|--------------|
| DOL-1208-W02MA | 6 020 992 | 2 m |
| DOL-1208-W05MA | 6 021 033 | 5 m |



Parametering cable PC to MLG E (L = 2 m)

Cable diameter 5 mm, 4 x 0.25 mm², sheath PVC

| Type | Order no. |
|---------------|-----------|
| DSL-8D04-G02M | 2 023 695 |



MLGsetup

parametering software (CD-ROM)
For Windows 95[®], Windows 98[®],
Windows NT[®], Windows ME[®],
Windows XP[®] configuration
software

| Order no. |
|-----------|
| 2 023 827 |

¹⁾ Minimum bend radius in dynamic use
R_{min} = 20 x cable diameter

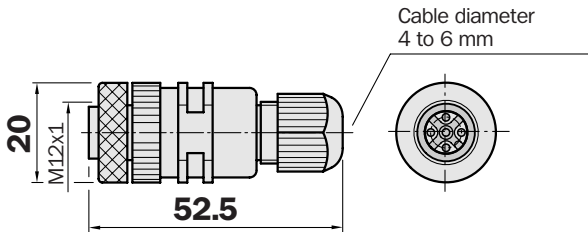
Dimensional drawings and order information

Cables and connectors ELG and MLG

SENSICK screw-in system M12, 5-pin, enclosure rating IP 67

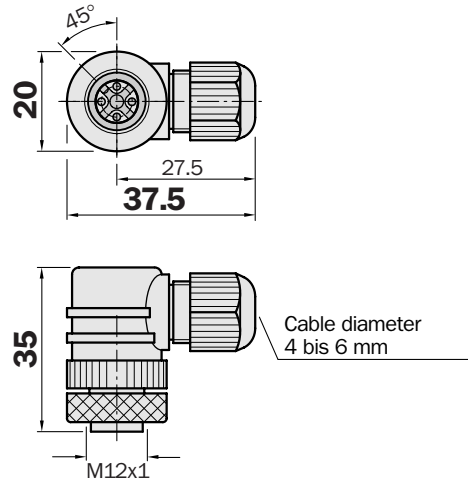
Female connector M12, 5-pin, straight

| Type | Order no. | Contacts |
|------------|-----------|----------|
| DOS-1205-G | 6 009 719 | 5 |



Female connector M12, 5-pin, right angle

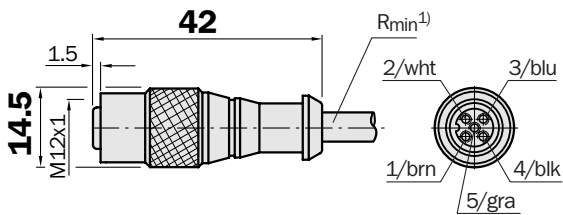
| Type | Order no. | Contacts |
|------------|-----------|----------|
| DOS-1205-W | 6 009 720 | 5 |



Female connector M12, 5-pin, straight

Cable diameter 5/6 mm, 4/5 x 0.25 mm², sheath PVC

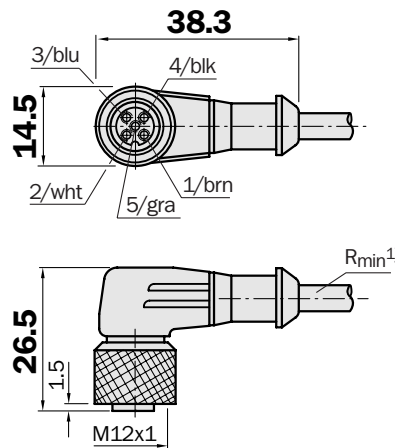
| Type | Order no. | Contacts | Cable length |
|---------------|-----------|----------|--------------|
| DOL-1205-G02M | 6 008 899 | 5 | 2 m |
| DOL-1205-G05M | 6 009 868 | 5 | 5 m |
| DOL-1205-G10M | 6 010 544 | 5 | 10 m |
| DOL-1205-G15M | 6 029 215 | 5 | 15 m |



Female connector M12, 5-pin, right angle

Cable diameter 5/6 mm, 4/5 x 0.25 mm², sheath PVC

| Type | Order no. | Contacts | Cable length |
|---------------|-----------|----------|--------------|
| DOL-1205-W02M | 6 008 900 | 5 | 2 m |
| DOL-1205-W05M | 6 009 868 | 5 | 5 m |
| DOL-1205-W10M | 6 010 544 | 5 | 10 m |



¹⁾ Minimum bend radius in dynamic use
 $R_{min} = 20 \times \text{cable diameter}$

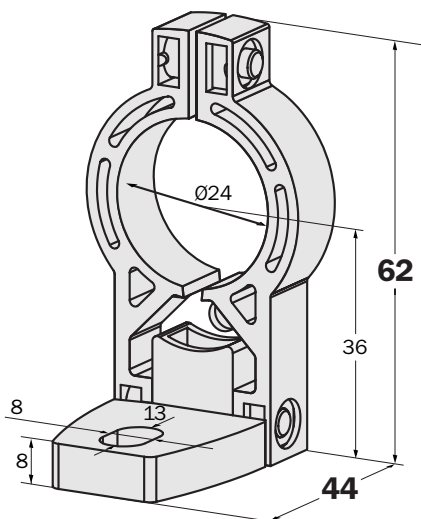
Dimensional drawings and order information

Mounting systems

Mounting kit 1 – Swivel Mount

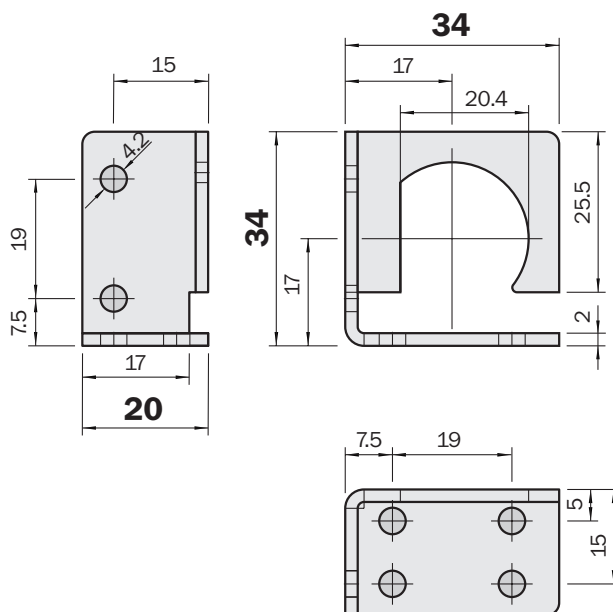
For MLG S and MLG E, recommended for detection heights up to 1600 mm

| Type | Order no. | Pieces |
|------|-----------|--------|
| | 2 019 649 | 4 |



Mounting kit 1 – compact metal angled bracket
recommended for all detection heights

| Type | Order no. | Pieces |
|------------|-----------|--------|
| BEF-WK-XLG | 2 029 100 | 4 |

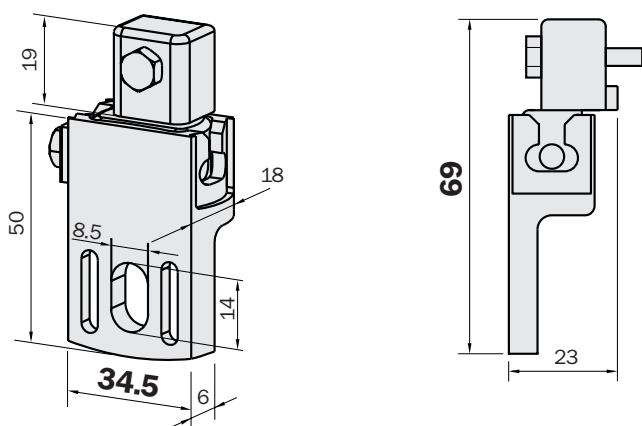


Mounting kit 4 – T-nuts with shifting nuts

Side mounting with shift nuts for all monitoring heights

(for high vibration and shock exposure)

| Type | Order no. | Pieces |
|-------------|-----------|--------|
| BEF-NUT-MLG | 2 023 696 | 4 |



MLG special accessory, alignment aid

Alignment aid

| Type | Order no. | Cable length |
|-------|-----------|--------------|
| AR 60 | 1 015 741 | 2 m |

Adapter for MLG housing

| Type | Order no. |
|------|-----------|
| | 4 032 462 |

Contact:

Australia

Phone +61 3 9497 4100
1800 33 48 02 – tollfree
E-Mail sales@sick.com.au

Belgium / Luxembourg

Phone +32 (0)2 466 55 66
E-Mail info@sick.be

Brazil

Phone +55 11 5091-4900
E-Mail sac@sick.com.br

Ceská Republika

Phone +420 2 57 91 18 50
E-Mail sick@sick.cz

China

Phone +852-2763 6966
E-Mail ghk@sick.com.hk

Danmark

Phone +45 45 82 64 00
E-Mail sick@sick.dk

Deutschland

Phone +49 (0)2 11 53 01-250
E-Mail vzdinfo@sick.de

España

Phone +34 93 480 31 00
E-Mail info@sick.es

France

Phone +33 1 64 62 35 00
E-Mail info@sick.fr

Great Britain

Phone +44 (0)1727 831121
E-Mail info@sick.co.uk

Italia

Phone +39 02 27 40 93 19
E-Mail ced@sick.it

Japan

Phone +81 (0)3 3358 1341
E-Mail info@sick.jp

Korea

Phone +82-2 786 6321/4
E-Mail kang@sickkorea.net

Netherlands

Phone +31 (0)30 229 25 44
E-Mail info@sick.nl

Norge

Phone +47 67 81 50 00
E-Mail austefjord@sick.no

Österreich

Phone +43 (0)22 36 62 28 8-0
E-Mail office@sick.at

Polska

Phone +48 22 837 40 50
E-Mail info@sick.pl

Schweiz

Phone +41 41 619 29 39
E-Mail contact@sick.ch

Singapore

Phone +65 6744 3732
E-Mail admin@sicksgp.com.sg

Suomi

Phone +358-9-25 15 800
E-Mail sick@sick.fi

Sverige

Phone +46 8 680 64 50
E-Mail info@sick.se

Taiwan

Phone +886 2 2365-6292
E-Mail sickgrc@ms6.hinet.net

Türkiye

Phone +90 216 388 95 90 pbx
E-Mail info@sick.com.tr

USA / Canada / México

Phone +1(952) 941-6780
1 800-325-7425 – tollfree
E-Mail info@sickusa.com

More representatives and agencies
in all major industrial nations at
www.sick.com