

Safety interlocks

i17

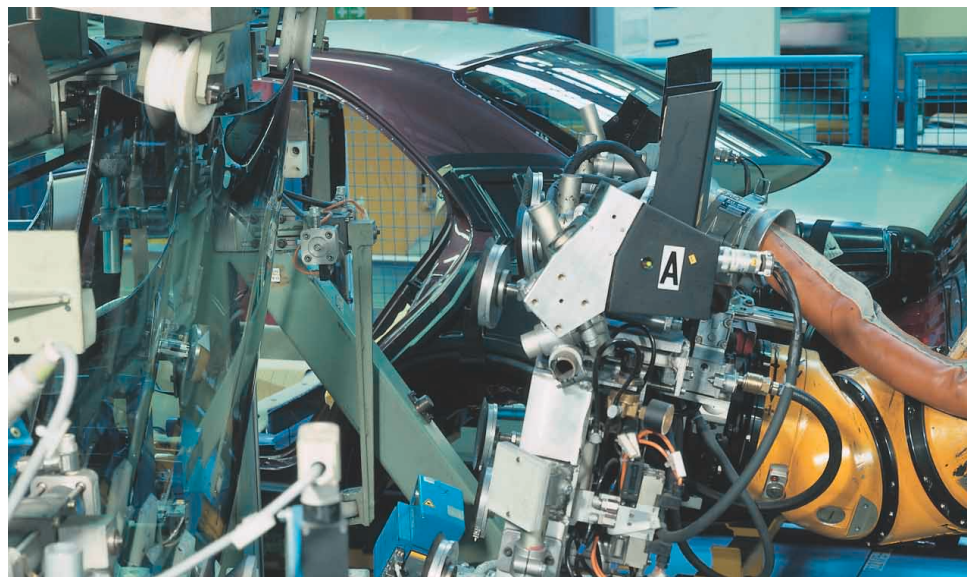


The i17 series safety switches are designed to ensure reliability and safety in movable guard control applications whether hinged or sliding.

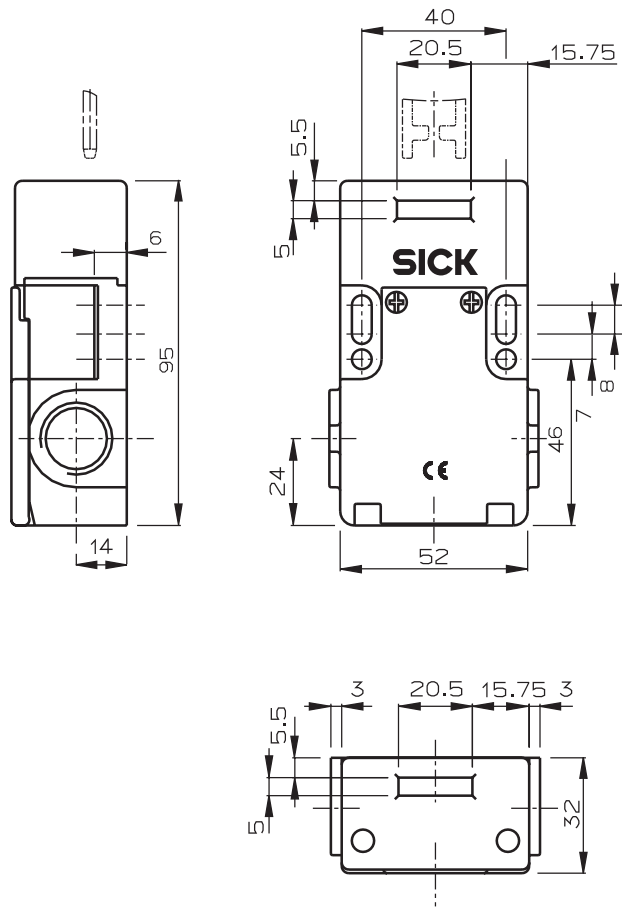
Due to the contact block with slow action 2 NC + 1 NO and to the optional rotation of the actuating head (2 x 180°), the flexibility of this safety switch series makes it ideal for several applications. The i17 also has a fiberglass reinforced thermoplastic housing and a high protection rating (IP 67). The wide range of accessories, including a technopolymer

covering head with flexible actuator engagement and 3 cable ports, make it suitable for many monitoring and safeguarding applications.

Another auxiliary retention device allows the retention force to be increased up to approximately 30 N when dealing with demanding applications.



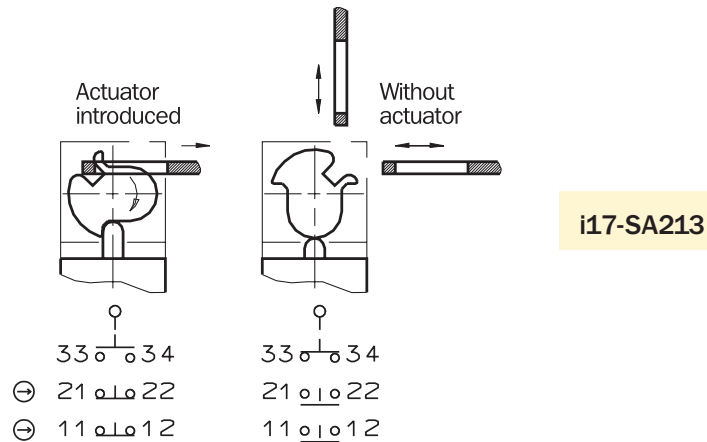
Drawings



Technical specifications

	i 17
Housing material	glass-reinforced plastic
Environmental protection to IEC 60 529	IP 67
Mechanical service life	1x10 ⁵ switching cycles
Ambient temperature	-20...80° C
Mounting position	selectable
Connection type	3 X M 20
Approach speed (max.)	1 m/s
Actuating force (min.)	12 N
Frequency of use (max.)	2 cycles/second
Contact elements positively guided (NC/NO)	2/1
Rated impulse with stand voltage U_{imp} contacts referred to housing	2500 V
Rated insulation voltage U_i	250 V
Utilization category to IEC 60947-5-1	CA 15 CA: 2 A (250 V), 5 A (100 V); CC 13 CC: 0.5 A (250 V), 2 A (24 V)
Switching voltage (min.)	5 V CC
Switching current (min.) at 5 V CC	5 mA
Wire cross-section	1 x 1.5 mm ²
Short-circuit protection (control circuit fuse EN 60269)	T10/10 A

Switching elements

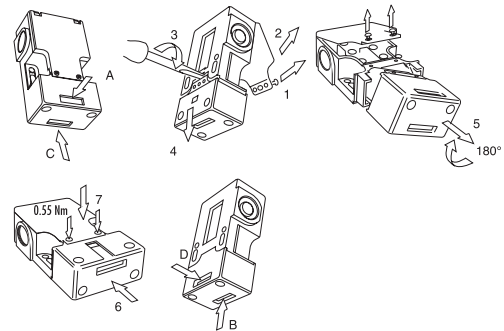


Installation notes

The safety switch and actuator must be assembled for installation purposes. The actuator must be permanently secured to the safety device such that it can no be detached, e.g., with unscrewable screws, rivets or welding. The safety switch should not be used as a mechanical stop plate.

Direction of insertion

- The small head can be oriented according to the desired insertion direction by unscrewing the four clamping screws.
- The switch is supplied with the small head set positioned in the A direction



If broken, complete safety switch and actuator should be replaced

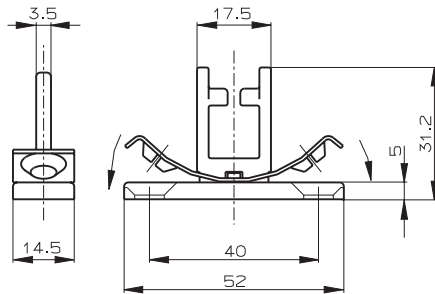
Product selection table

Model	Variant	Dual pole Switch		Connector M 20	Part number
		NC	NO		
i 17	SA	2	1	3	6 025 067

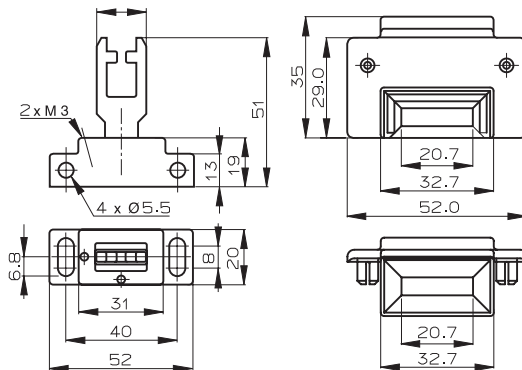
We recommend contacting Customer Service for product selection

Accessories

Actuator straight iE17-S1
Part number 5 311 130



Flexible with technopolymer head iE16-F1
Part number. 5 311 129



Auxiliary holding device (~ 30N) iE 16-SCR
Solo with actuator STD iE16-S1
Part number 5310780

